



**On the Path to Production**  
**Saskatchewan's**  
**Next Gold Miner**

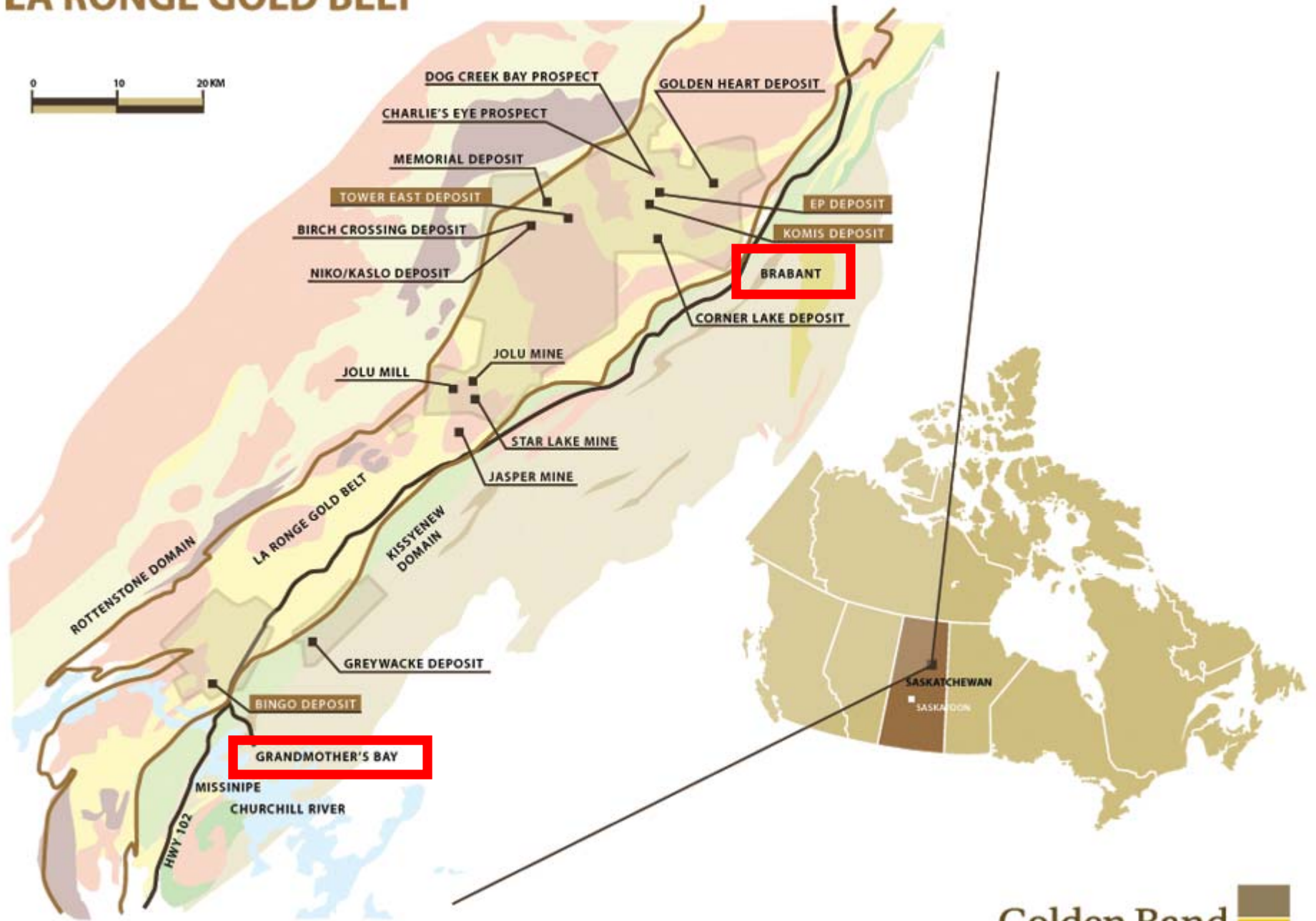
community information meetings - October 2007

**Golden Band**   
RESOURCES INC

## Who We Are

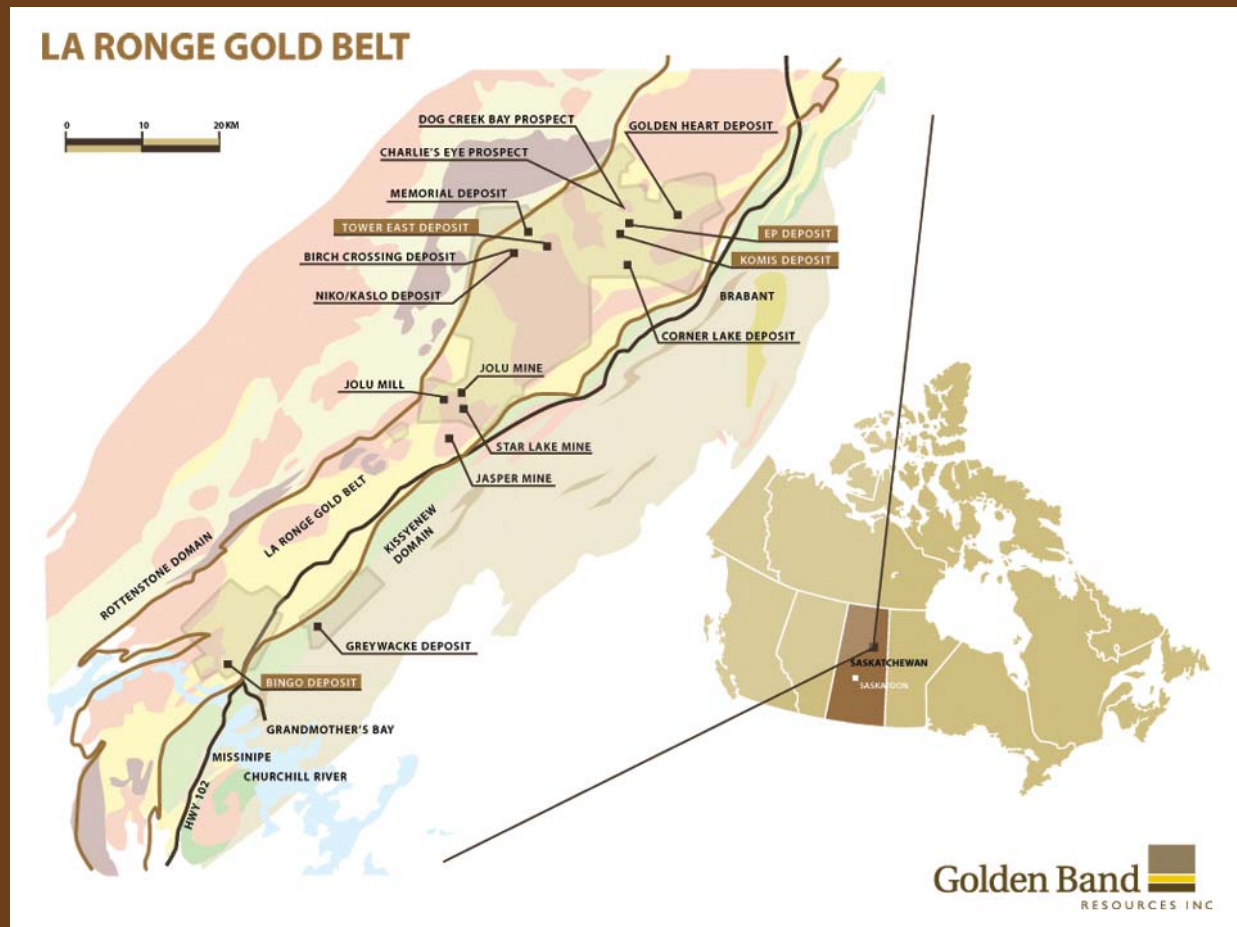
- Public company
- Saskatchewan-based
- Gold exploration and development
- Working in the La Ronge Gold Belt since 1994
- 10 known gold deposits, four former producing mines, licensed gold mill and tailings management facility

# LA RONGE GOLD BELT



# Exploration

- Exploration
  - Prospecting
  - Geochem
  - Advanced
  - Ongoing
- Long-term process



# Exploration

- Land Acquisition
  - Claim staking
  - Acquisitions
  - Joint Ventures
- Permit Acquisition and other Regulatory Requirements
  - Permits



- Reconnaissance Exploration

- Prospecting
- Soil Sampling
- Lithochemical Sampling
- Geological Mapping



## Exploration



# Exploration

- Anomaly Identification
  - Trenching
  - Detailed Geological Mapping and Sampling
  - Exploratory Drilling



# Exploration

- Outlining the Resource
  - In-Fill Drilling
  - Resource Drilling
  - Underground
- Reporting
  - Technical Reports



# Underground

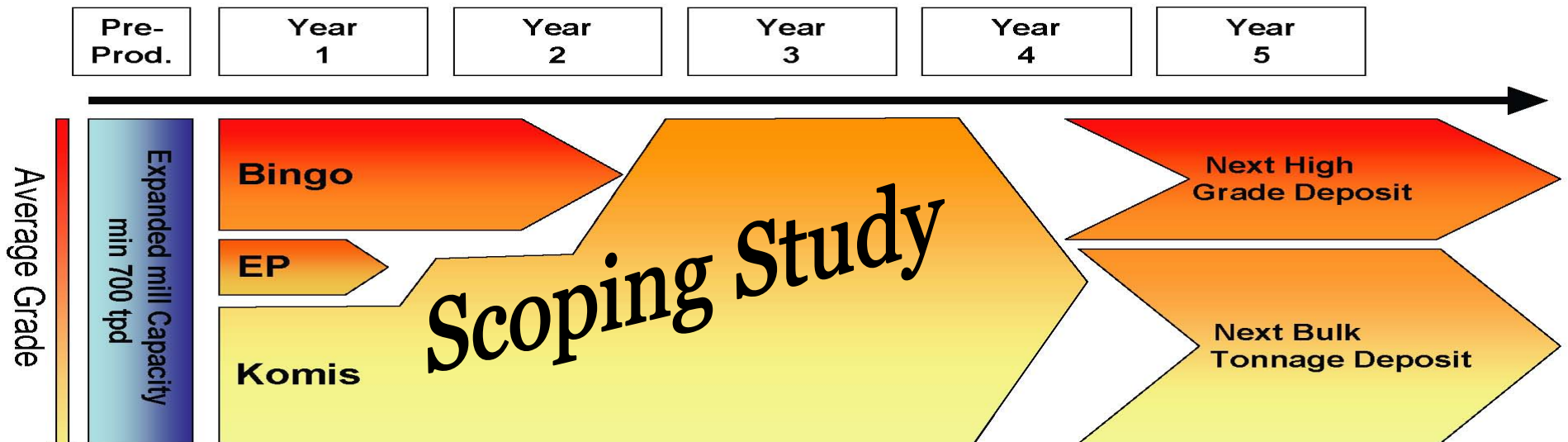
- Exploration
- Outlining the Resource



# The Path to Production

- Development and production
  - Bingo, Komis and EP
  - Initial 4-year mining plan
  - Jolu Mill expansion
  - Capital expenditure of at least \$17 million
  - 141,500 oz of gold / 38,000 oz/yr

# The Plan for Production



**Bingo:** High-grade underground deposit – “Sweetener”

**EP:** Medium-grade near-surface deposit – “Low cost sweetener”

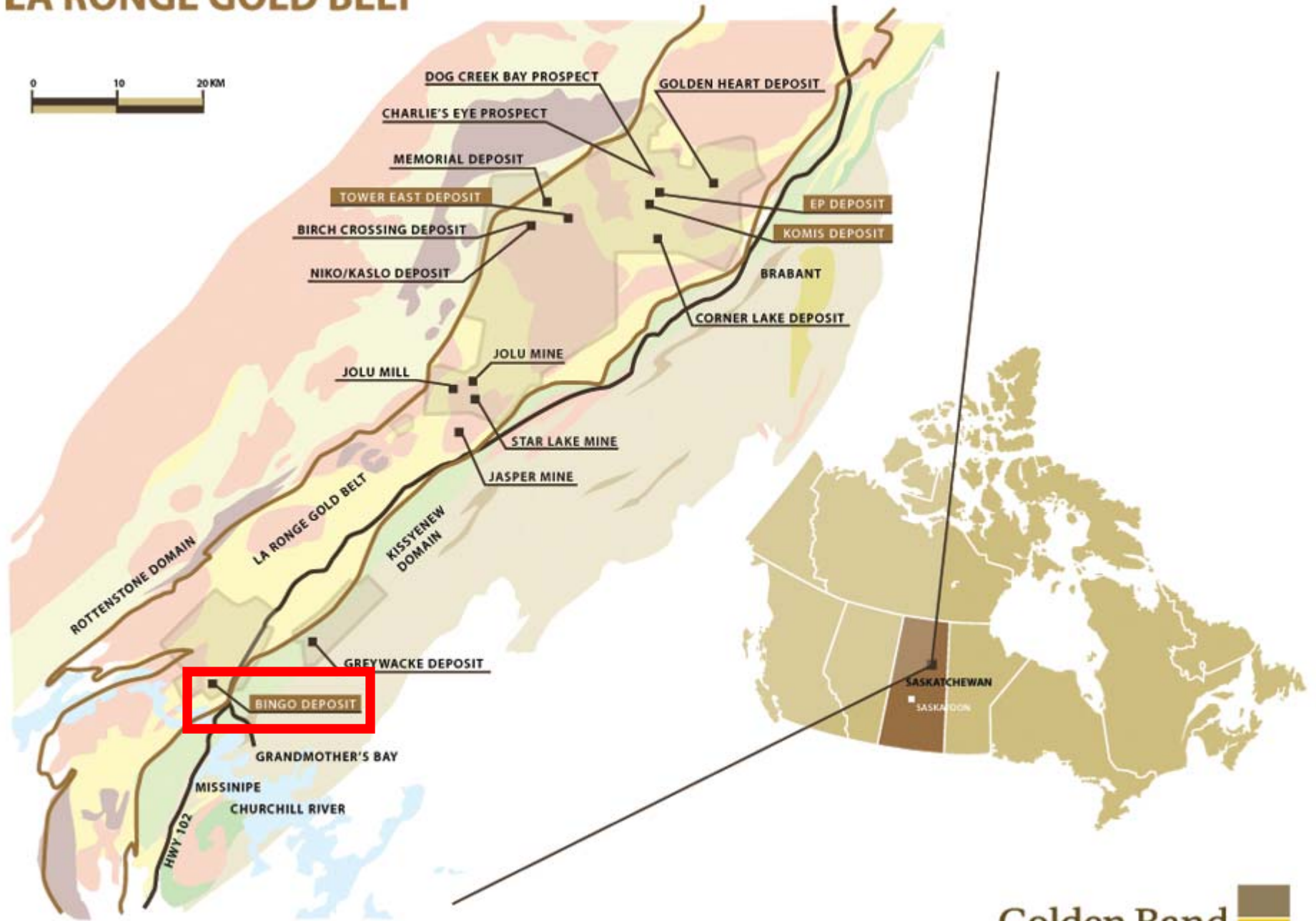
**Komis:** Low-grade bulk tonnage deposit – “Mill base load”

Note: Deposit block sizes demonstrate mill feed contribution to Jolu

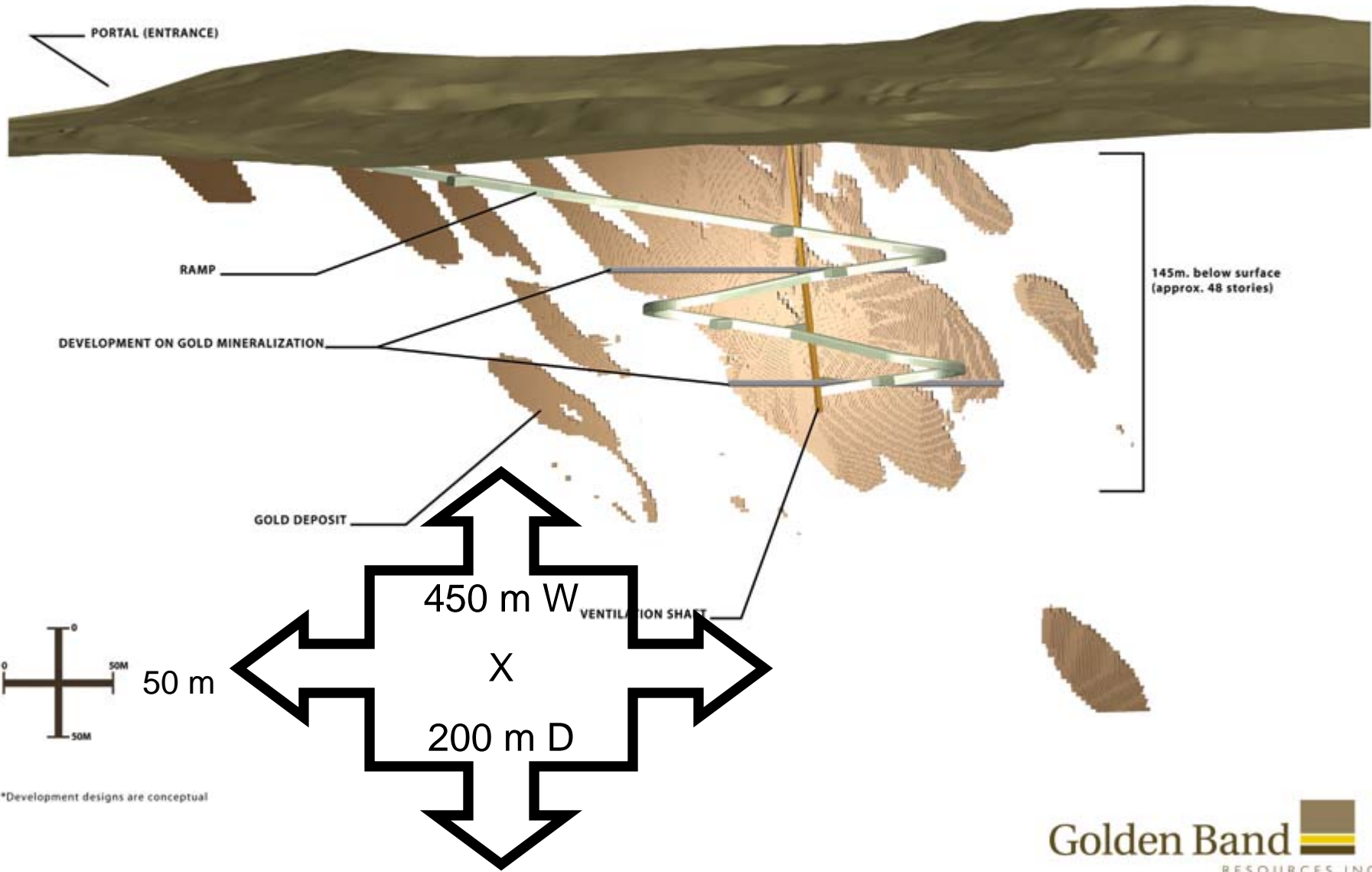
## Expanded Production Plan

- Now to also include Tower East open pits
- Potential to expand project life to 10 years
- Ongoing exploration

# LA RONGE GOLD BELT



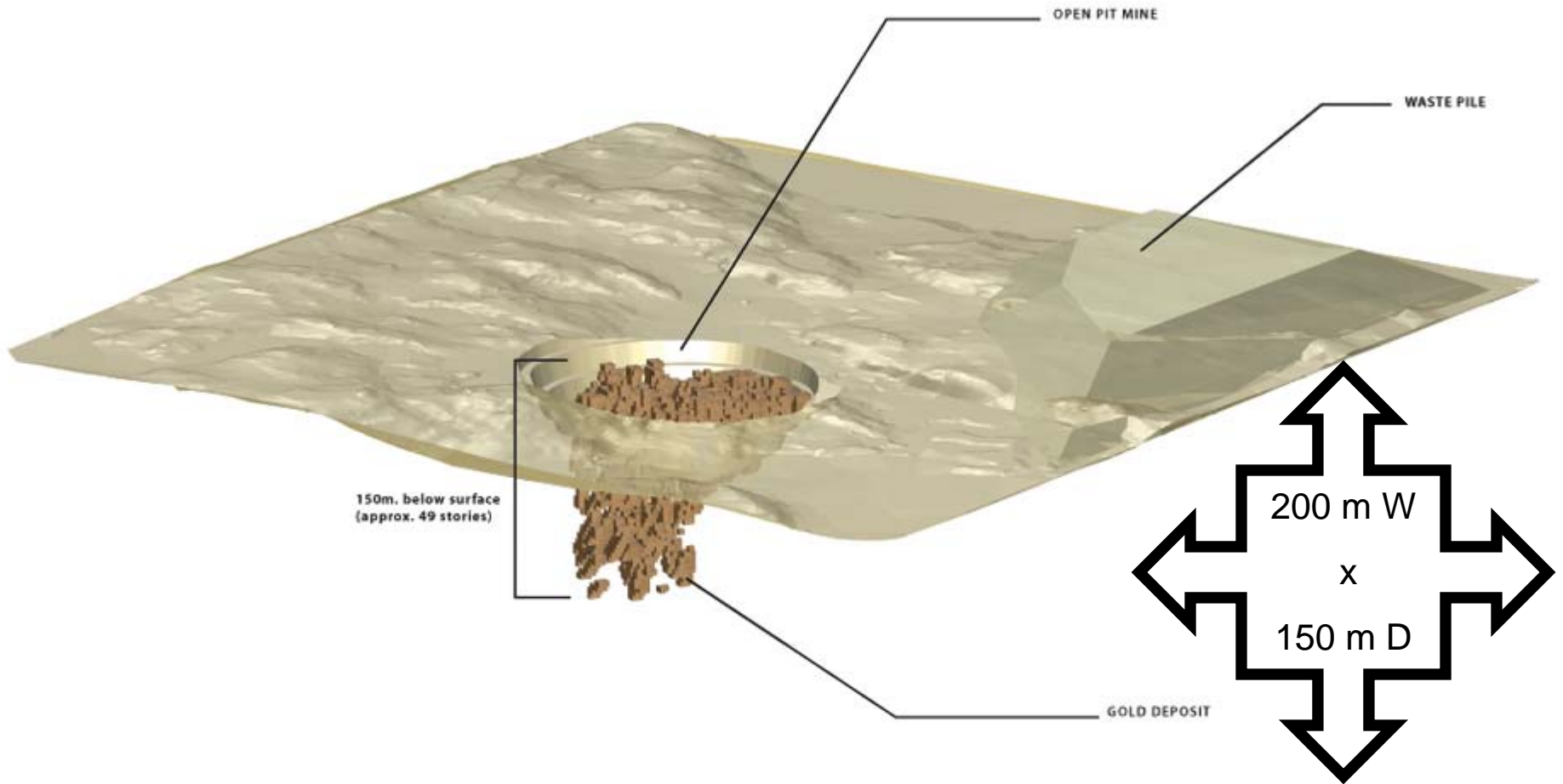
# BINGO GOLD DEPOSIT



# LA RONGE GOLD BELT



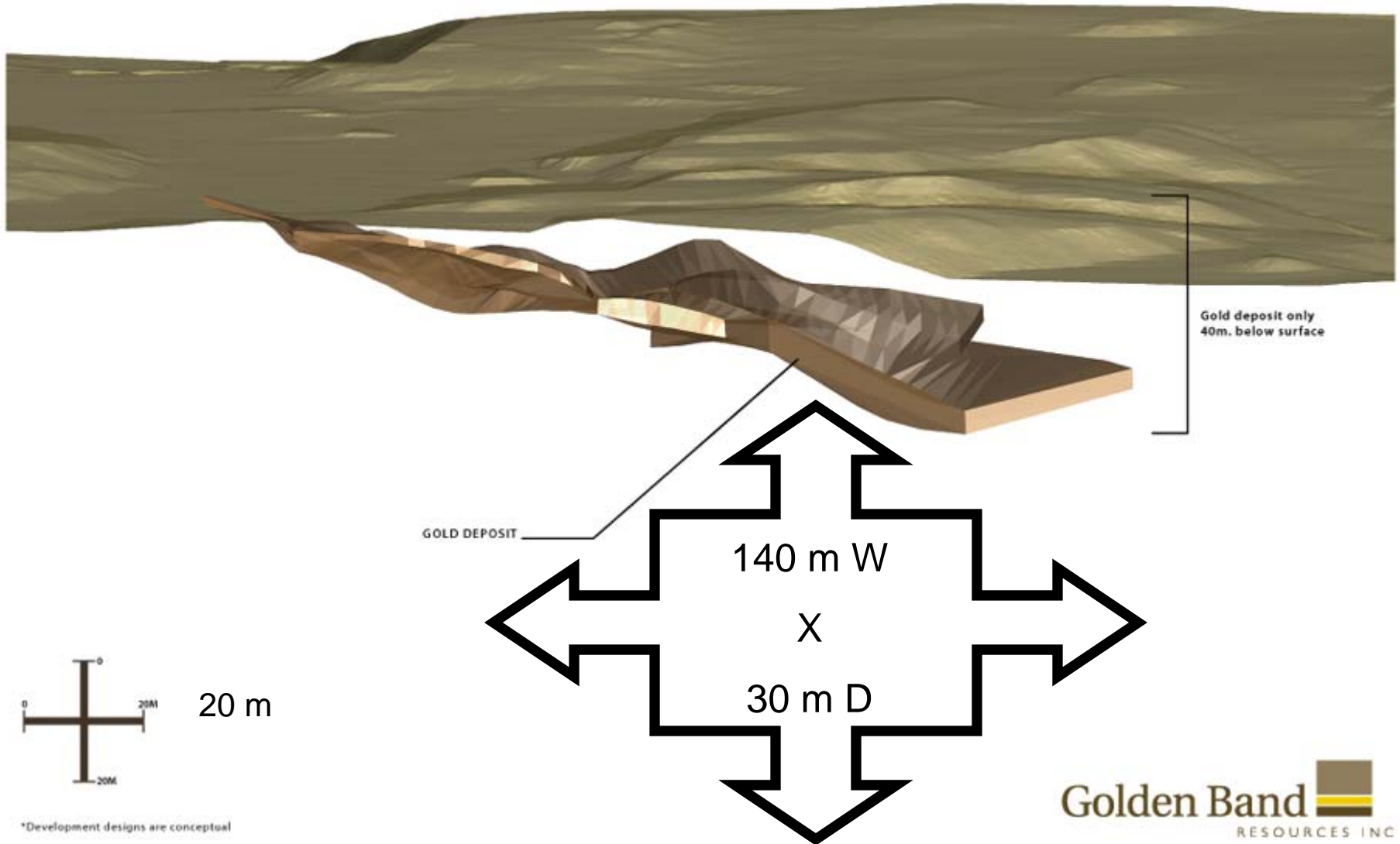
# KOMIS GOLD DEPOSIT



\*Development designs are conceptual

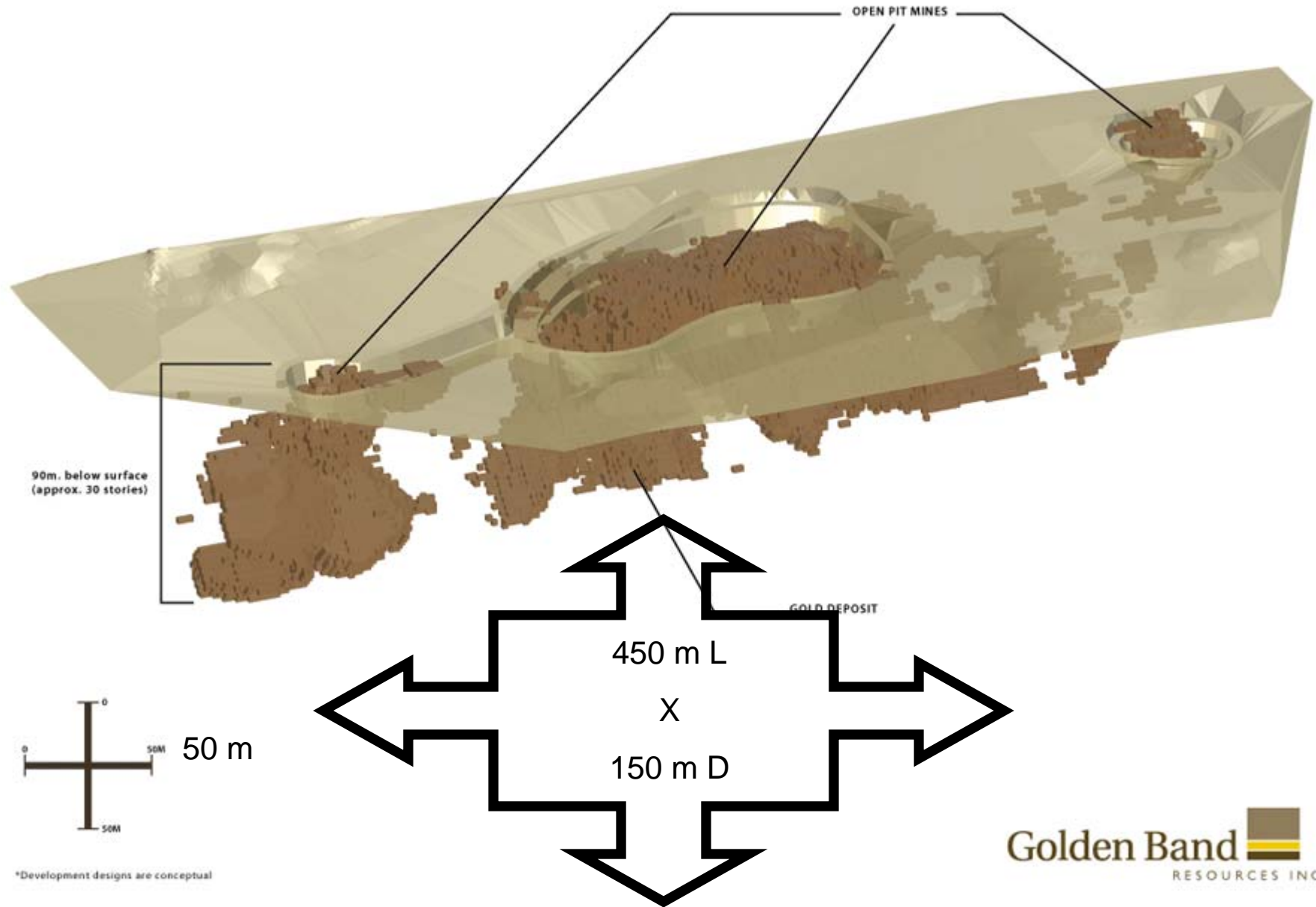
# EP GOLD DEPOSIT

The EP Gold Deposit will be mined as an open pit.

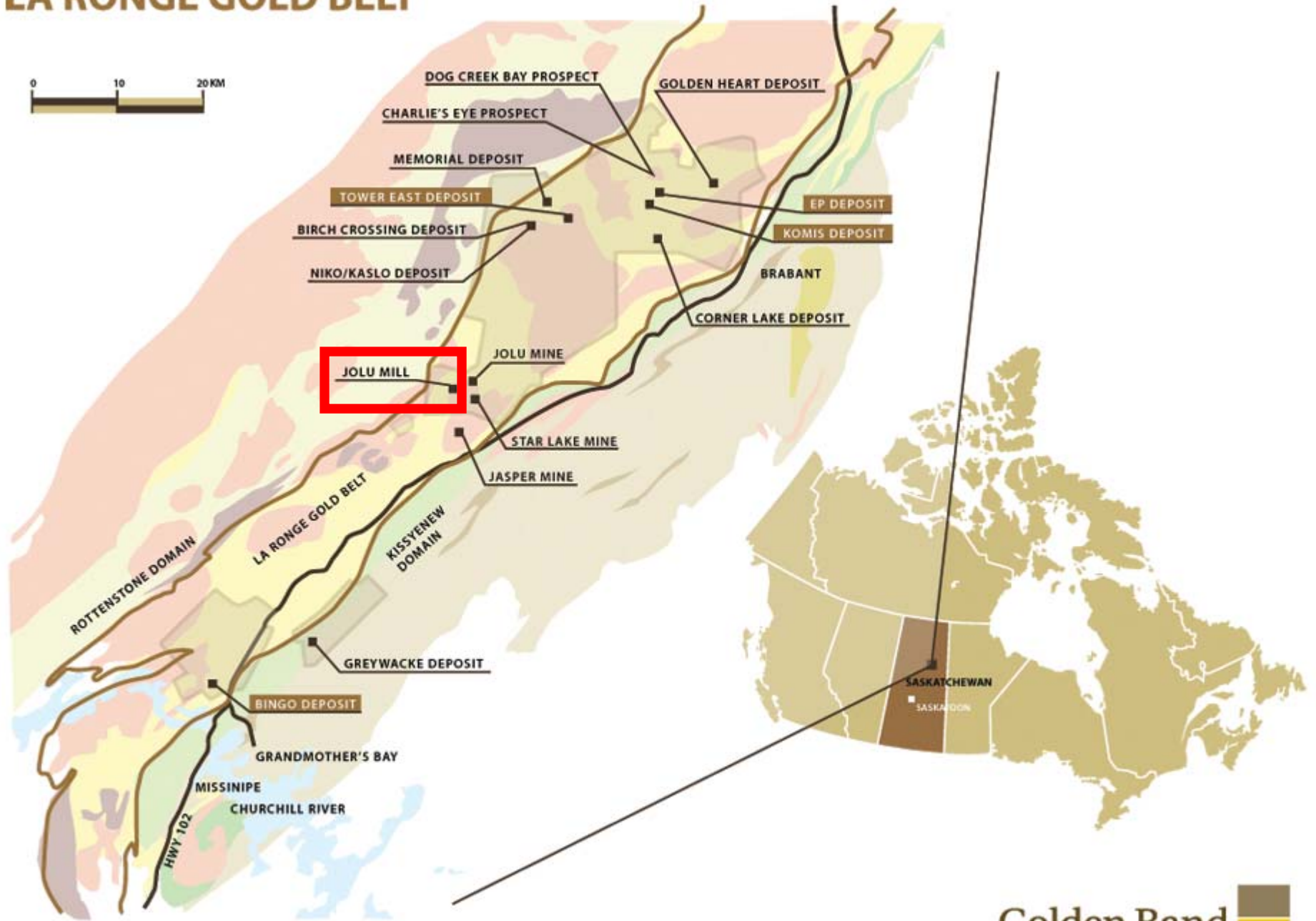


\*Development designs are conceptual

# TOWER EAST GOLD DEPOSIT



# LA RONGE GOLD BELT



# Jolu Mill

- up to 35 employees in two shifts
- camp work
- other goods and services

# JOLU MILL TAILINGS POND



# Environment



- Helped develop new mineral exploration guidelines
- Collection of environmental baseline data by Kitsaki's **Canada North Environmental Services**

# Environment

- Development related
  - Project proposal submitted to SK Environment
  - Environmental Assessment required
  - Submission of Environmental Impact Statement



# Employment and Business

- Exploration activities
- Construction
- Transportation



# Employment and Business



- Environmental
- Camp work
- Goods and services
- Reclamation
- & more

# Social Responsibility

- MoU signed with **Lac La Ronge Indian Band**
- Direct & indirect employment
- General Services Agreement signed with **Kitsaki / Procon Joint Venture**
- Community information and involvement



# Social Responsibility

## MoU signed with **Lac La Ronge Indian Band**:

- outlines the intentions and relationships of a broader, mutually beneficial, partnership
- sets out forward-thinking, strategic, understandings and intentions on the establishment of relationships
- will help further the advancement of exploration and mining by Golden Band in ways that are mutually beneficial

## How to get in touch

**Golden Band Resources**

**100 - 701 Cynthia Street**

**Saskatoon, SK S7L 6B7**

**Phone 306.955.0787 ext. 20**

**Fax 306.955.0788**

**Rodney Orr, President and CEO**

**Email: [rodney.orr@goldenbandresources.com](mailto:rodney.orr@goldenbandresources.com)**

**[www.goldenbandresources.com](http://www.goldenbandresources.com)**



# Notices

- All of Golden Band's exploration programs and pertinent disclosure of a scientific nature are prepared and/or designed and carried out under the supervision of Frank Hrdy, P.Geo., Golden Band's VP Exploration, who serves as the qualified person (QP) under the definitions of National Instrument 43-101. All of Golden Band's development-related programs and pertinent disclosure of a development nature are prepared and/or designed and carried out under the supervision of Gary Haywood, P.Eng., Golden Band's VP of Operations, who serves as the qualified person (QP) under the definitions of National Instrument 43-101.
- **Forward Looking Statements:** Some of the statements in this presentation contain forward-looking information which involves inherent risk and uncertainty that may affect the business of Golden Band Resources Inc. Actual results may differ materially from those currently anticipated in such statements.
- The TSX Venture Exchange has not reviewed and does not accept responsibility for the adequacy or accuracy of this information.