

2008 Vancouver Resource Investment Conference

January 20, 2008

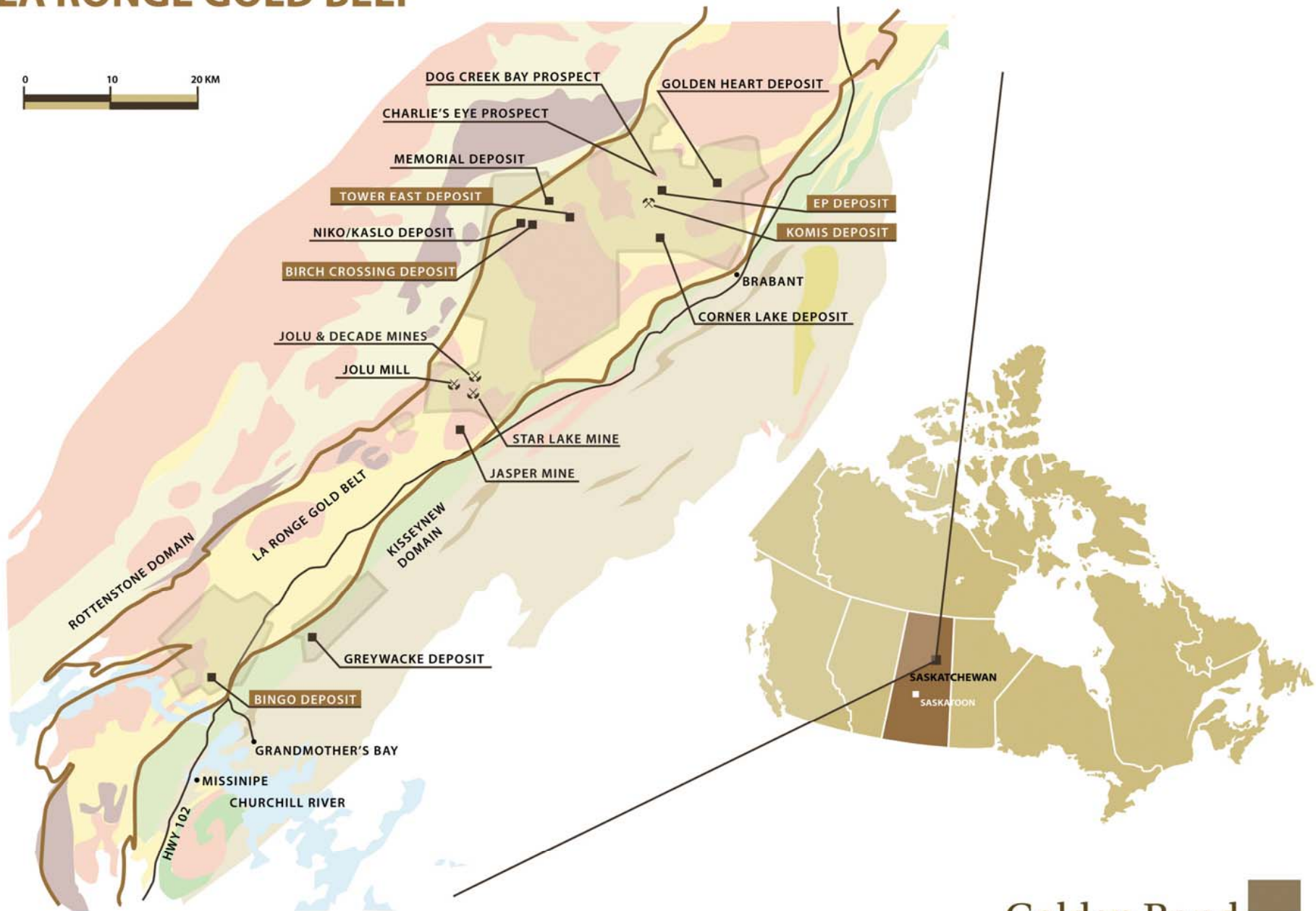
Listing and symbol: **TSX.V - GBN**

Golden Band 
RESOURCES INC

Notices

- All of Golden Band's exploration programs and pertinent disclosure of a scientific nature are prepared and/or designed and carried out under the supervision of Frank Hrdy, P.Geo., Golden Band's VP Exploration, who serves as the qualified person (QP) under the definitions of National Instrument 43-101. All of Golden Band's development-related programs and pertinent disclosure of a development nature are prepared and/or designed and carried out under the supervision of Gary Haywood, P.Eng., Golden Band's VP of Operations, who serves as the qualified person (QP) under the definitions of National Instrument 43-101.
- **Forward Looking Statements:** Some of the statements in this presentation contain forward-looking information which involves inherent risk and uncertainty that may affect the business of Golden Band Resources Inc. Actual results may differ materially from those currently anticipated in such statements.
- The TSX Venture Exchange has not reviewed and does not accept responsibility for the adequacy or accuracy of this information.

LA RONGE GOLD BELT





2008 Focus:

1) Continued aggressive and diverse exploration programs.



2) Become a sustainable gold producer.

Gold Resources (NI 43-101)

- Total Measured + Indicated.....**756,551** ounces
- Total Inferred.....**249,553** ounces
- Includes 7 of 10 deposits (**100% owned**)
 - Komis, Tower East, Golden Heart, Memorial, Bingo, Birch Crossing & EP (resource estimate update in progress)
- Non-43-101 deposits:
 - Corner Lake, Niko-Kaslo, & Greywacke (49%)

Exploration and Development Plans

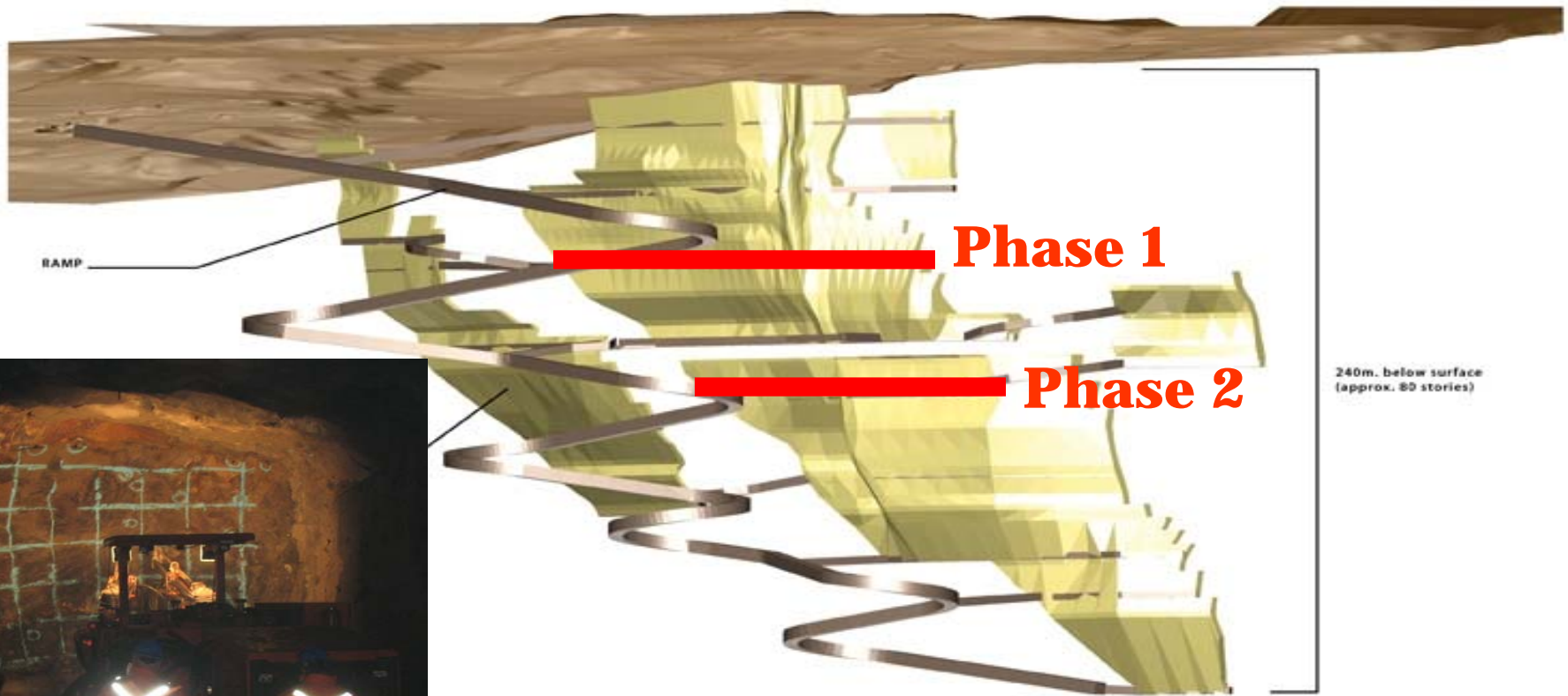
- EP and Charlie's Eye and former Decade mine drilling programs, 2007.
- Winter drilling at Decade, Golden Heart, Niko/Kaslo & Birch Crossing.
- Summer grassroots to advanced exploration programs.
- Advancement of underground Bingo exploration program:



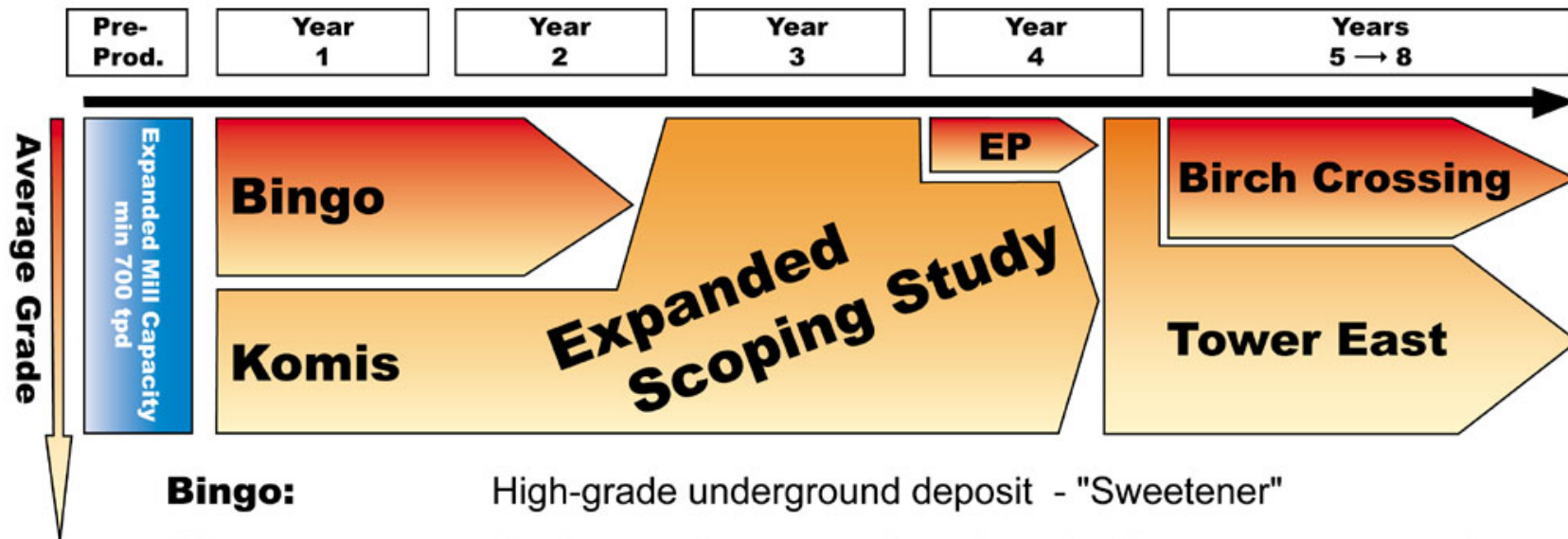
- 160 metres of decline developed to date.
- First ore level end of February.
- Second level planned; May completion.

Exploration and Development Plans

BINGO GOLD DEPOSIT



The Plan For Production (Expanded Scoping Study)



Bingo: High-grade underground deposit - "Sweetener"

EP: Medium-grade near-surface deposit - "Low cost sweetener"

Komis: Low-grade bulk tonnage deposit - "Mill base load"

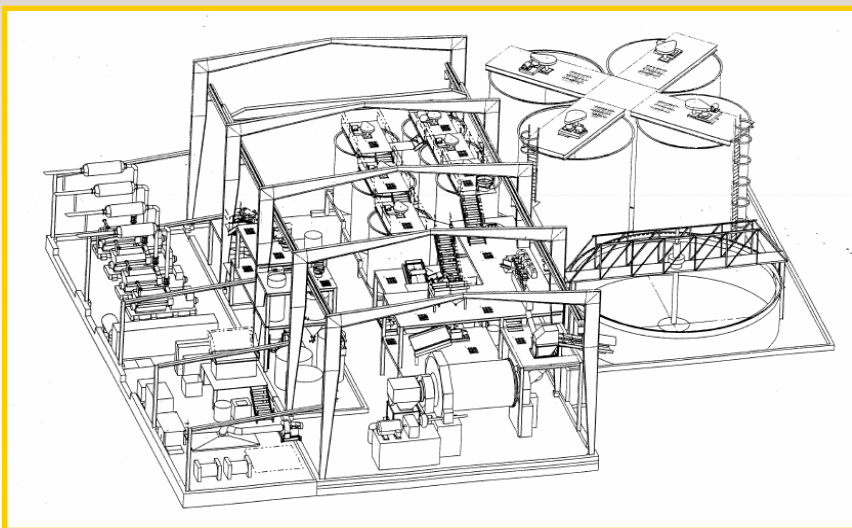
Tower East: Low-grade bulk tonnage deposit - "Mill base load"

Birch Crossing: Medium-grade near-surface deposit - "Sweetener"

Note: Deposit block sizes demonstrate mill feed contribution

Development and Production Plans

- Finalization of Expanded Scoping Study:
 - Extend project to 8-year minimum.
 - Including Tower East and Birch Crossing gold deposits.
 - Preliminary design and updated costs for re-commissioning the Jolu mill at a 700 to 1,000 tonnes per day capacity.
 - Cost estimates for establishing grid power supply, tailings and effluent disposal, and upgrading the gravity gold recovery circuit.



Report completion
January 2008.

Environmental Assessment & Permitting

1. Project Proposal submitted to province in July 2007 comprising four mines and Jolu central milling facility.
2. Environmental Impact Assessment will be required.
3. Baseline studies and environmental database.
4. Draft project specific guidelines from province in January 2008.
5. Public review and final guidelines.
6. Submission of Environmental Impact Statement.
7. 12 – 18 month process from initial proposal (= July to December 2008).
8. Possible review under Canadian Environmental Assessment Act.

Local Communities Corporate Social Responsibility

Memorandum of Understanding with the Lac La Ronge Indian Band

Sets out forward-thinking, strategic, understandings and intentions on the establishment of **relationships** between us that will help further the advancement of **exploration and mining** by Golden Band in ways that are **mutually beneficial** for the Lac La Ronge Indian Band.



2008 Objectives

Business Plan

1. Expand Preliminary Economic Assessment to include 4 mines + Jolu mill.
2. As required, advance to pre-feasibility and/or feasibility.
3. Complete permitting process.
4. Conclude a production decision and timeline.
5. Acquire additional financing.

2008 Objectives

Social and Environment

- Develop working dialogues and business opportunities with local communities:
 - Goods and services
 - Employment
 - Strong local relationships on a business-to-business level
- Public participation in the environmental review process.

Looking Forward

Mid-Term (5 years):

- Develop the Jolu Central Mill Project with daily milling capacity up to 1,000 tonnes, producing at least **50,000 ounces gold per year**.
- Exploration to continue to advance additional targets for “pipeline” of development projects.

Looking Forward

Long-Term (10 years):

- Maintain gold production for 10 years+ in the La Ronge Gold Belt.
- Looking at opportunities to expand capacity to least 1,200 tonnes per day, producing **70,000 ounces gold per year.**

Share Structure

- Issued and outstanding..... 121,644,464
- Reserved:
 - Warrants..... 18,281,722
 - Options..... 6,130,000
 - Fully Diluted.....146,056,186

Shares (as of January 15, 2008)

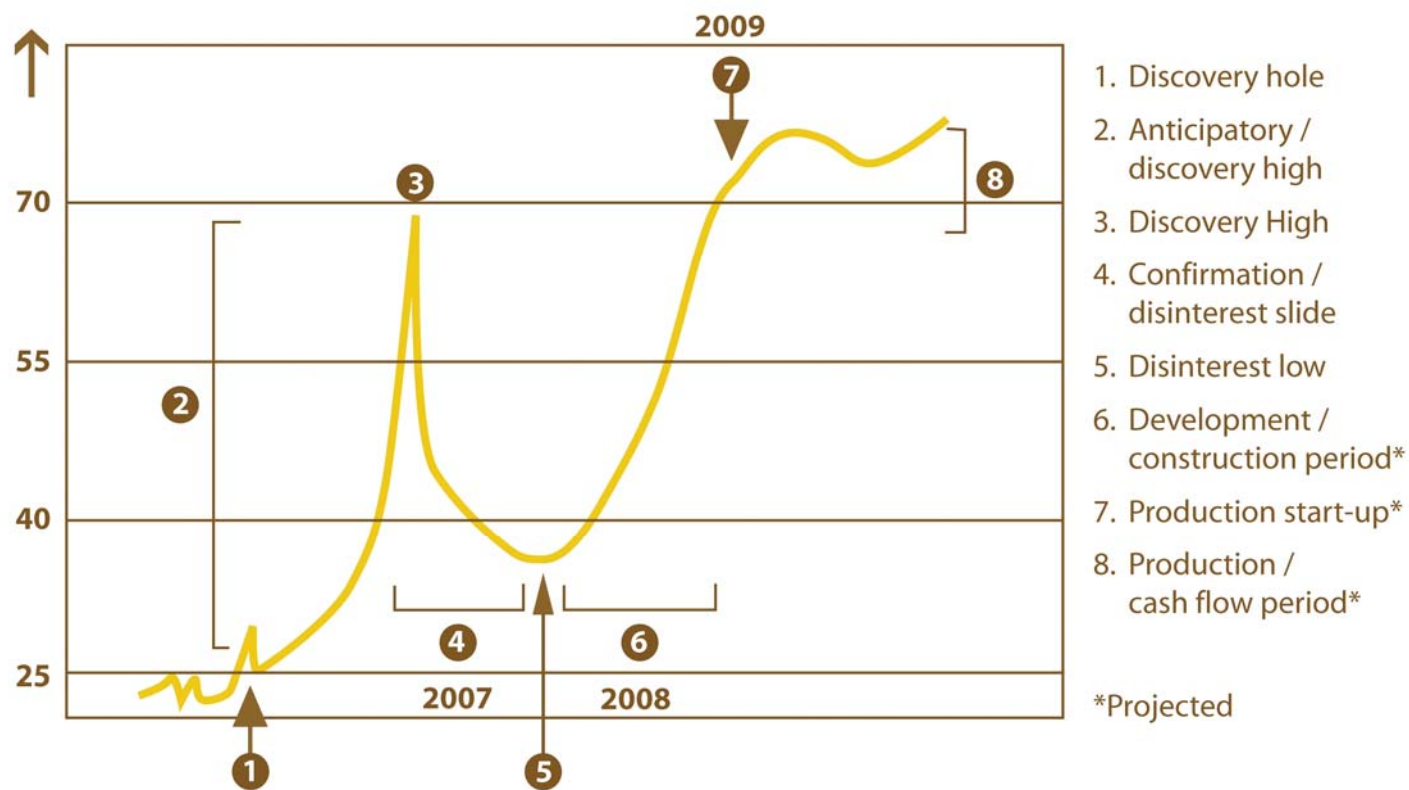
- Listing and symbol TSX.V - GBN
- Recent Share Price \$0.54
- 52-week Range \$0.68 - \$0.34
- Volume (3 month) 156,000 / day
- Market Capitalization \$68,000,000
- Shares held by Directors & Officers 10.6%

Trading History (52-week)



<http://tsedb.globeinvestor.com>

Model of a Classic Mining Company: Share Price Cycle



Institutional and Corporate Shareholders

- Sprott Asset Management
- Forty-Nine North Resource Fund
- Northern Precious Metals Fund
- Cameco (2.2%)
- AREVA (0.7%)
- Directors and Management (10.6%)

Financial Status

January 2008

- Working capital \$14,514,000
- Flow-through dollars..... \$11,300,000
- Hard dollars..... \$3,200,000
- Burn Rate: Nov to Mar'08.....\$1,200,000/mo

Golden Band Resources Inc.

100 - 701 Cynthia Street

Saskatoon, SK S7L 6B7

Phone: 306.955.0787 x13

Fax: 306.955.0788

Rodney Orr, President and CEO

Email: rodney.orr@goldenbandresources.com

www.goldenbandresources.com

GBN: TSXV

Booth # 508

