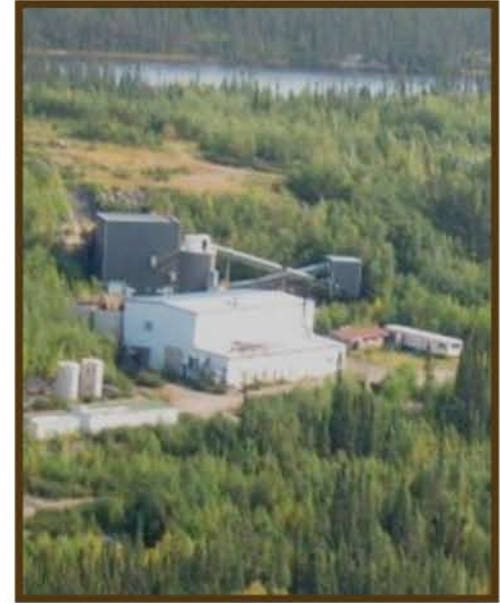


La Ronge Gold Project

2010 Plans and
Opportunities

Brabant Community Meeting

July 15, 2010



Golden Band 
RESOURCES INC

Notices

All of Golden Band's development-related programs and pertinent disclosure of a development nature are prepared and/or designed and carried out under the supervision of Gary Haywood, P.Eng., Golden Band's VP of Operations and COO, who serves as the qualified person (QP) under the definitions of National Instrument 43-101.

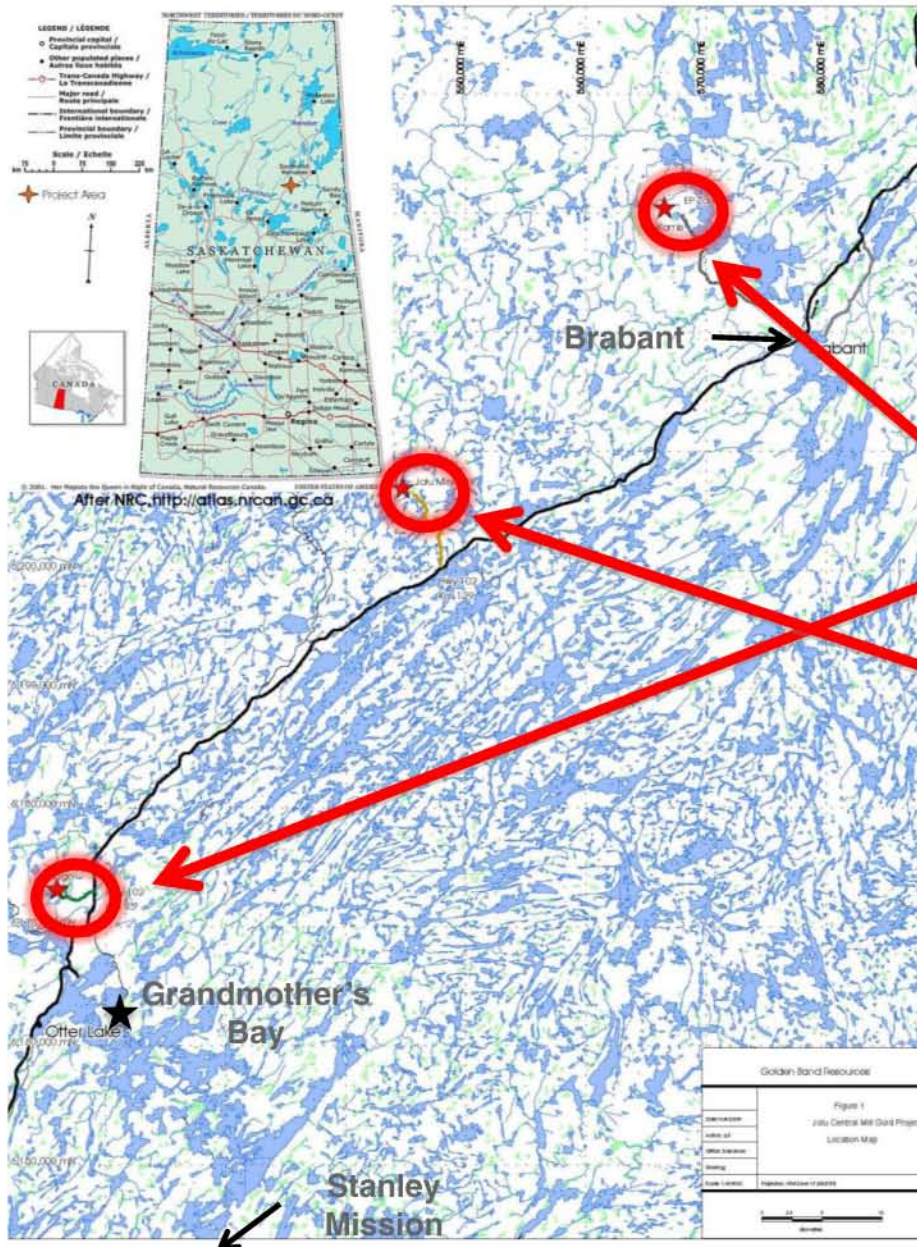
Forward Looking Statements: Some of the statements in this presentation contain forward-looking information which involves inherent risk and uncertainty that may affect the business of Golden Band Resources Inc. Actual results may differ materially from those currently anticipated in such statements.

Neither TSX Venture Exchange nor its Regulation Services Provider (as that term is defined in the policies of the TSX Venture Exchange) accepts responsibility for the adequacy or accuracy of this release.

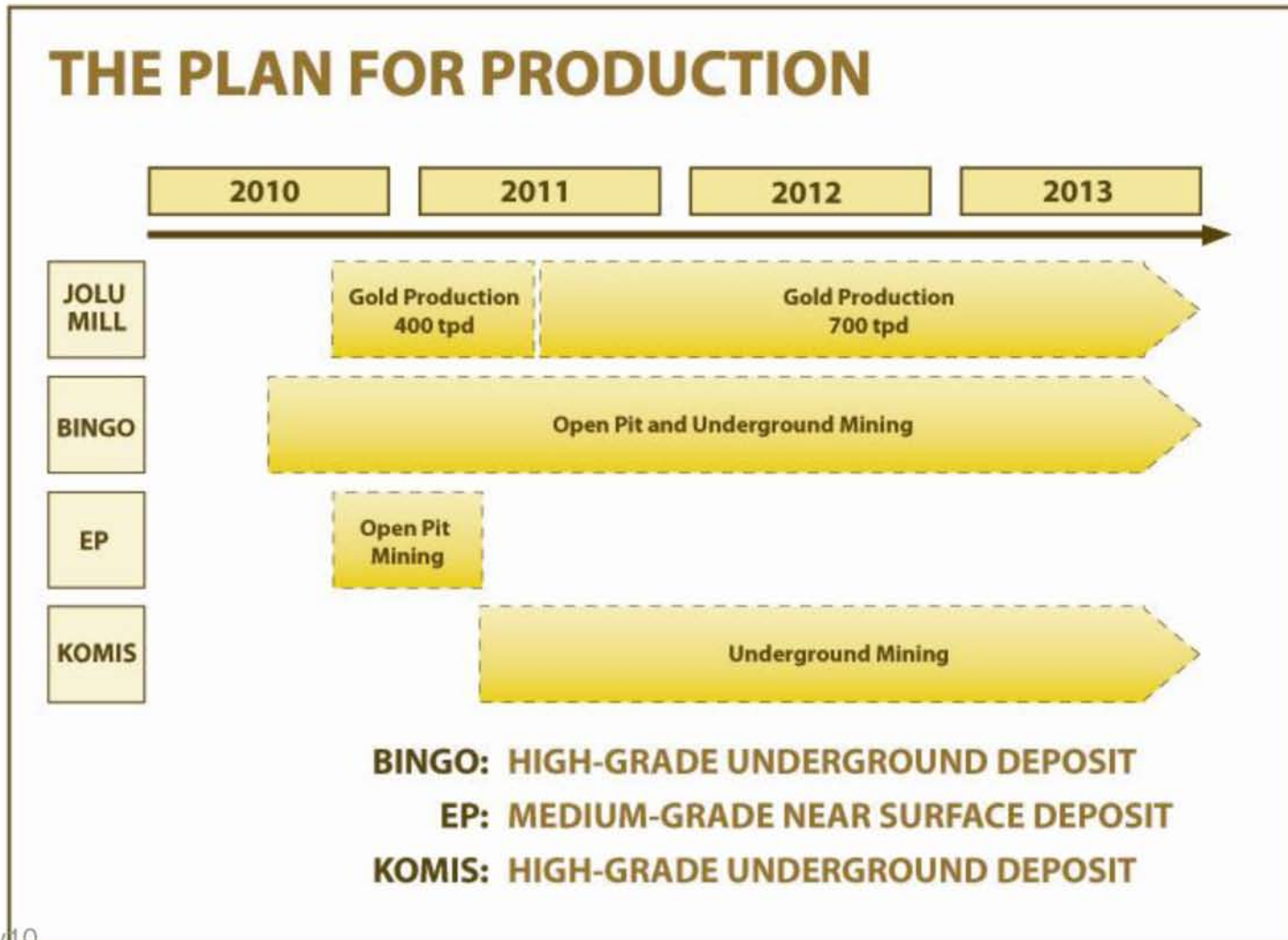
The La Ronge Gold Project

2010 Plans

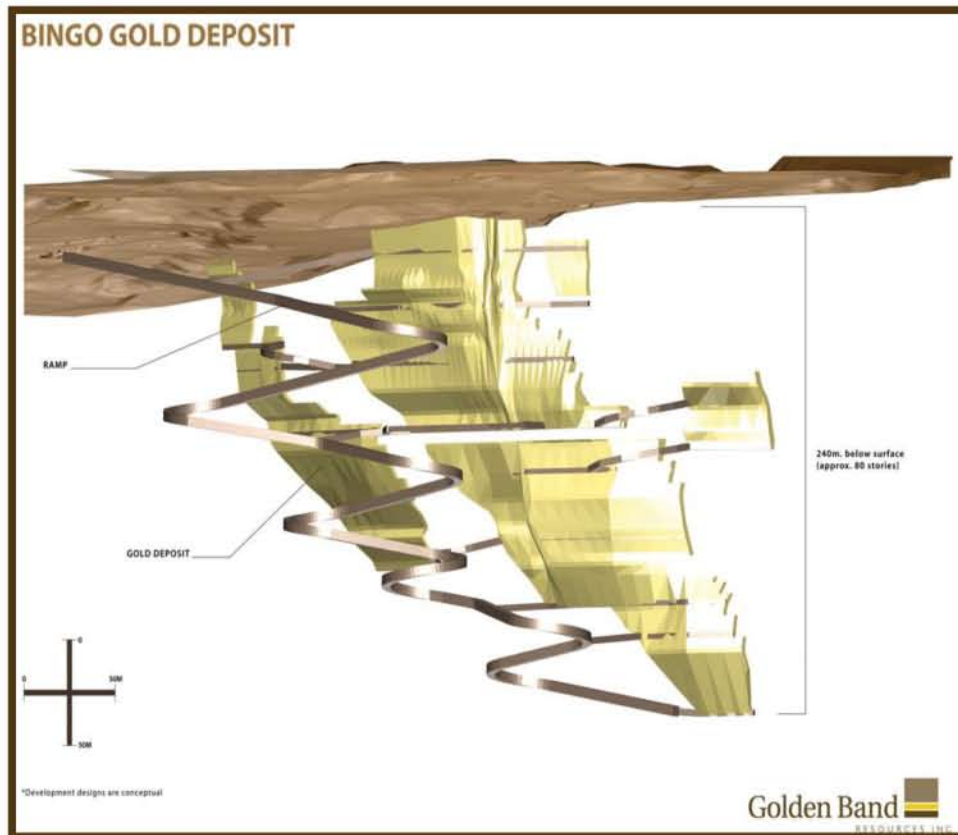
- Bingo deposit
- EP deposit
- Komis deposit
- Jolu Mill & TMF



La Ronge Gold Project: Mining Sequence

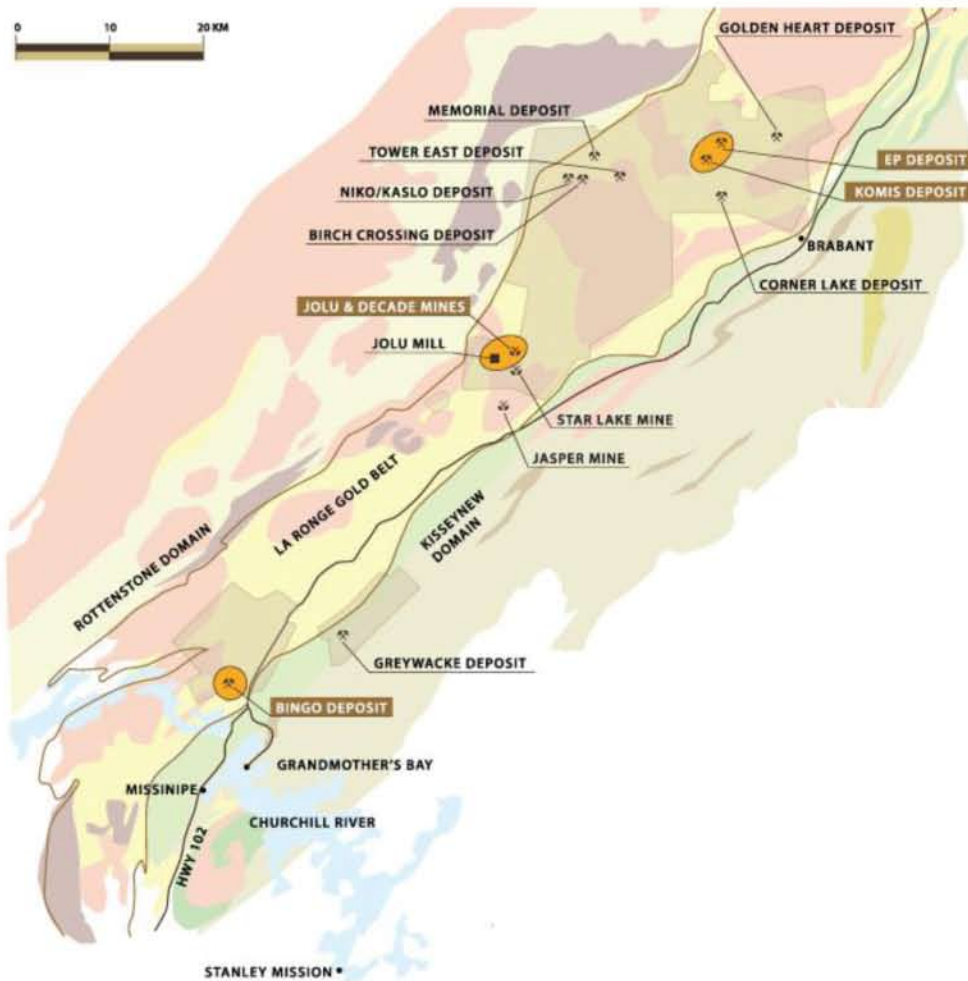


The Bingo Mine



- Underground work suspended in June 2008 and restarted in Feb. 2010.
- In June, 2010 completed 750m of exploration devt. on 2 levels.
- Pre-production development phase to include open pit, UG development of infrastructure.
- UG Production phase to commence in September 2010.
- Kitsaki Procon JV to provide mining and ore trucking services.

Komis & EP Gold Mines



- EP will be mined as a small open pit once gold production is underway.
- Komis to be developed as an UG operation after completion of an initial exploration program
- Dewater workings and assess resource in 2010
- Develop for production for start-up in 2011
- Jolu mill to ramp up to 700 tpd

The Jolu Mill

- Mill refurbishment commenced in June, 2010. Will require 4 months and a further month of commissioning.
- SaskPower to provide grid power supply from Lindsay Lake sub-station. Brushcutting is complete and poles are being erected.
- Other construction activity includes assay lab and office facility, tailings facility, roads, and 49-man camp.
- Mill operation at 400 tpd in October using Kitsaki ProconJV operators.



Jolu Above Ground TMF



- A relatively small (10.5 ha), above ground tailings management facility.
- Intercept and divert clean water around the facility.
- Collect contaminated water and pump it to the mill for re-use in the milling process.
- Operate for approximately 1 year.
- Allows the project to proceed without use of the Mallard TMF.

Mallard TMF



- Complete Federal EA Process & Schedule 2 designation.
- Remove fish.
- Commission in summer of 2011.
- Expand capacity of facility by raising the existing dykes, re-establish freshwater diversion works, construct outlet control/flow monitoring station and upgrade perimeter road.

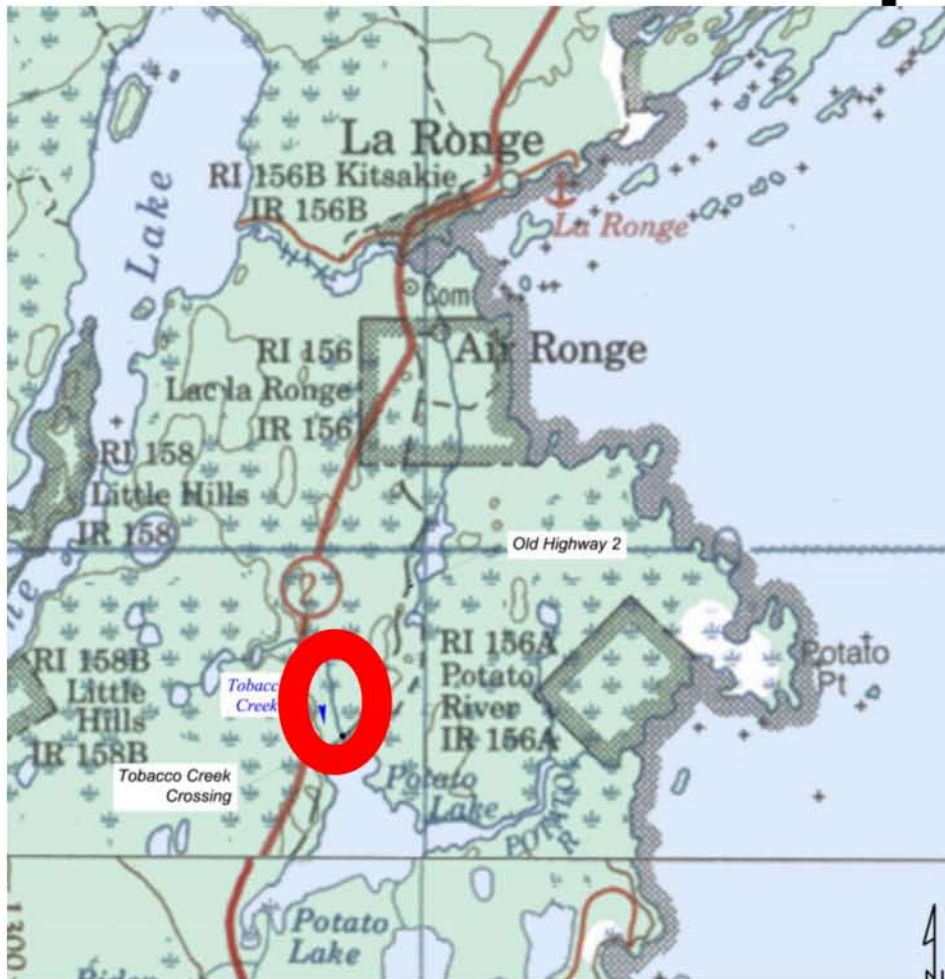
Mallard TMF

Federal EA Process



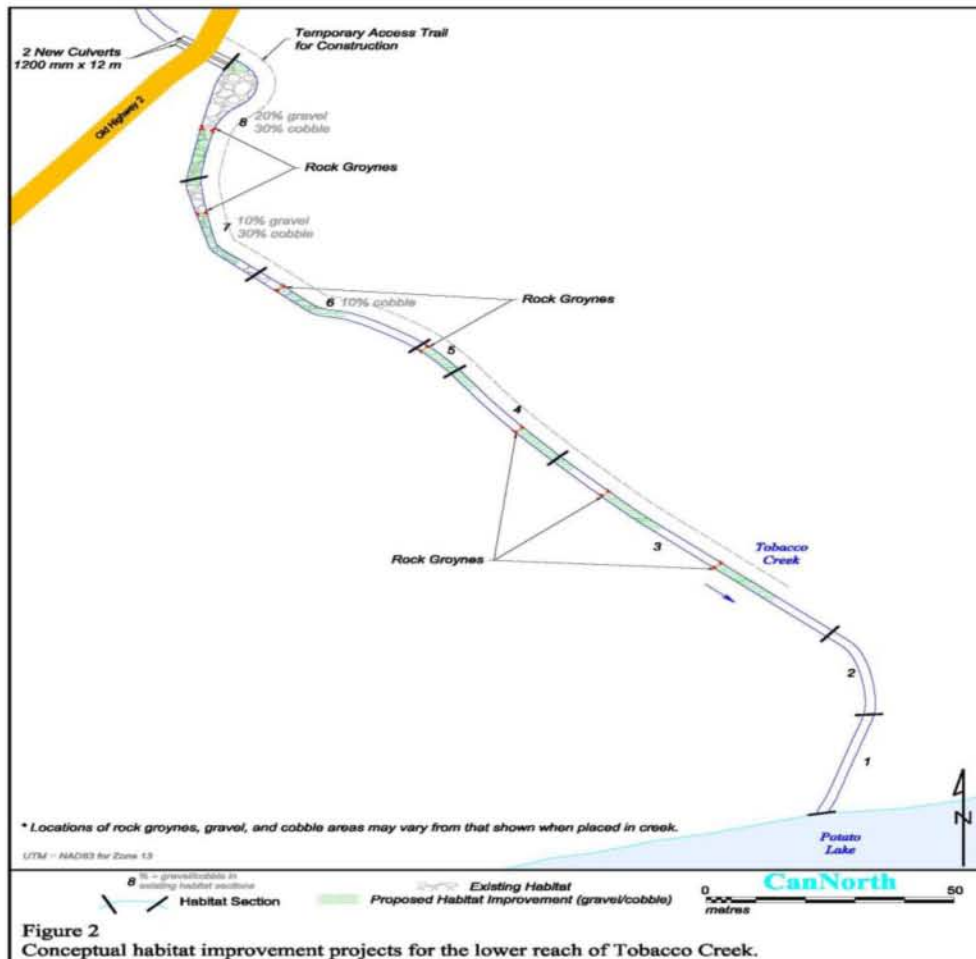
- Federal technical review process took longer and DFO required that a habitat compensation plan be approved prior to the preparing a screening report.
- Provincial Ministerial Decision issued on May 25, 2009 after concluding project was environmentally acceptable.
- Federal Process has taken longer than Provincial process but DFO advised Golden Band in November 2009 that technical issues had been resolved and habitat compensation plan been accepted.
- On June 4th, 2010, DFO advised Golden Band that the Screening Report was completed after public review sessions in La Ronge and Ottawa.

Mallard TMF Fish Habitat Compensation Plan



Create and improve walleye spawning habitat in Tobacco Creek, a formerly significant spawning creek for Lac La Ronge.

Fish Habitat Compensation Plan



- Construction of cobbled creek bed and rock groynes to promote fish spawning.
- Working with MoE to re-stock Potato lake with walleye.
- Monitoring required over several years to measure success/impact.

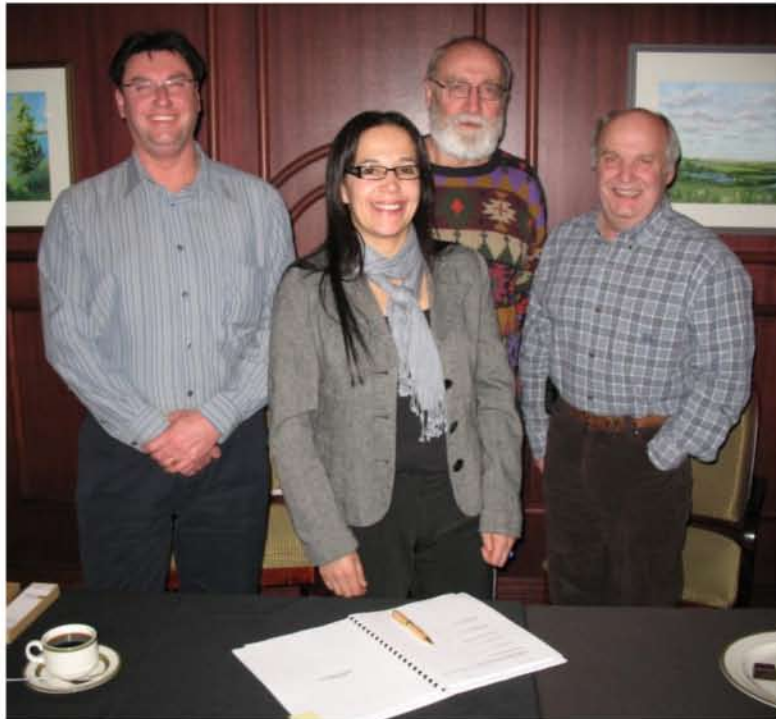
La Ronge Gold Project

Economic Benefits

- Golden Band expects that the La Ronge Gold Project will create up to 100 full time jobs with an estimated payroll of between \$25M and \$30M.
- It will also require expenditures of up to \$150M to purchase goods and services.
- It is Golden Band's intent to secure a significant portion of the workforce, goods and services from Northern Saskatchewan.

La Ronge Gold Project

Ongoing Relationship with LLRIB

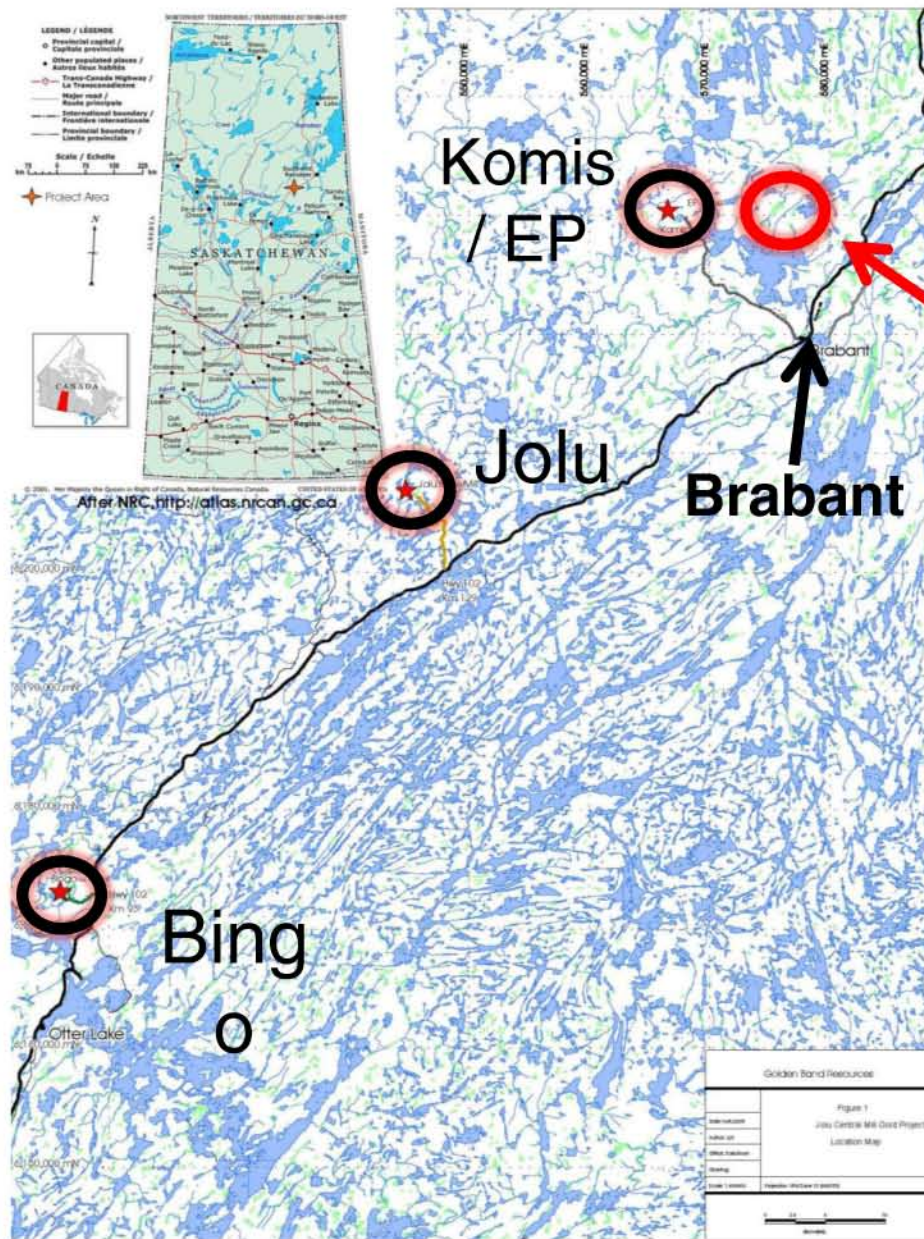


- Golden Band Resources Inc. is committed to providing the maximum amount of social and economic benefit to local communities during the development and operations of the La Ronge Gold Project.
- An important step in this commitment was the signing of a General Services Agreement (GSA) with Kitsaki Procon Joint Venture on February 11, 2010.

La Ronge Gold Project

GSA with Kitsaki / Procon

- The GSA confirms business opportunities from the project, including: mine development and production mining, mill refurbishment and operation, surface construction, ore haulage, and accommodation services.
- In addition, the agreement asserts the commitments that both organizations have made to ensure environmentally responsible mineral development, promotion of a safe and healthy worksite, and hiring and training for members of the Lac La Ronge Indian Band.
- The Kitsaki Procon Joint Venture consists of Kitsaki Mining Limited Partnership, which is part of the for-profit economic development agency of the Lac La Ronge Indian Band, and Procon Mining Partnership.



Future Development Project

Golden Heart Deposit

- Small open pit(s) and underground mine.
- Environmental Baseline data being gathered and compiled.
- Environmental Assessment documentation to be submitted in 2010.



Golden Band Resources Inc.

100 - 701 Cynthia St., Saskatoon, SK S7L 6B7

P.O. Box 540 La Ronge, SK S0J 1L0

www.goldenbandresources.com

TSXV: GBN

Golden Band 
RESOURCES INC