



# On the Path to Gold Production

2008 Update

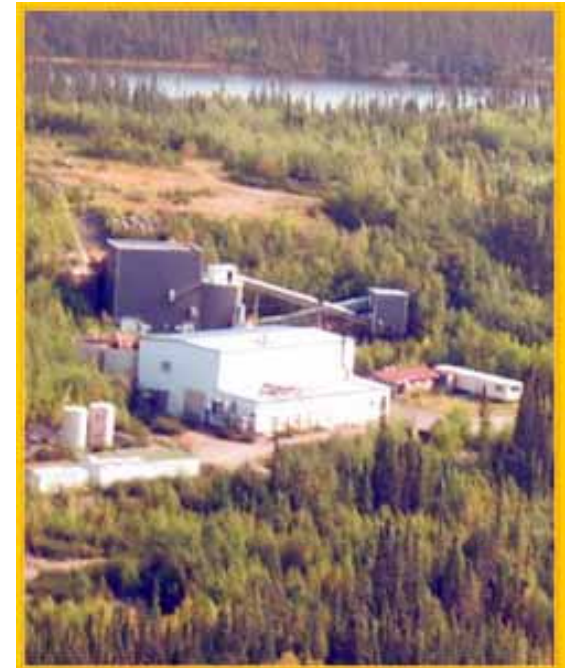
on

## Exploration and Development

in the

## La Ronge Gold Belt, Saskatchewan

2008 Open House  
December 2, 2008

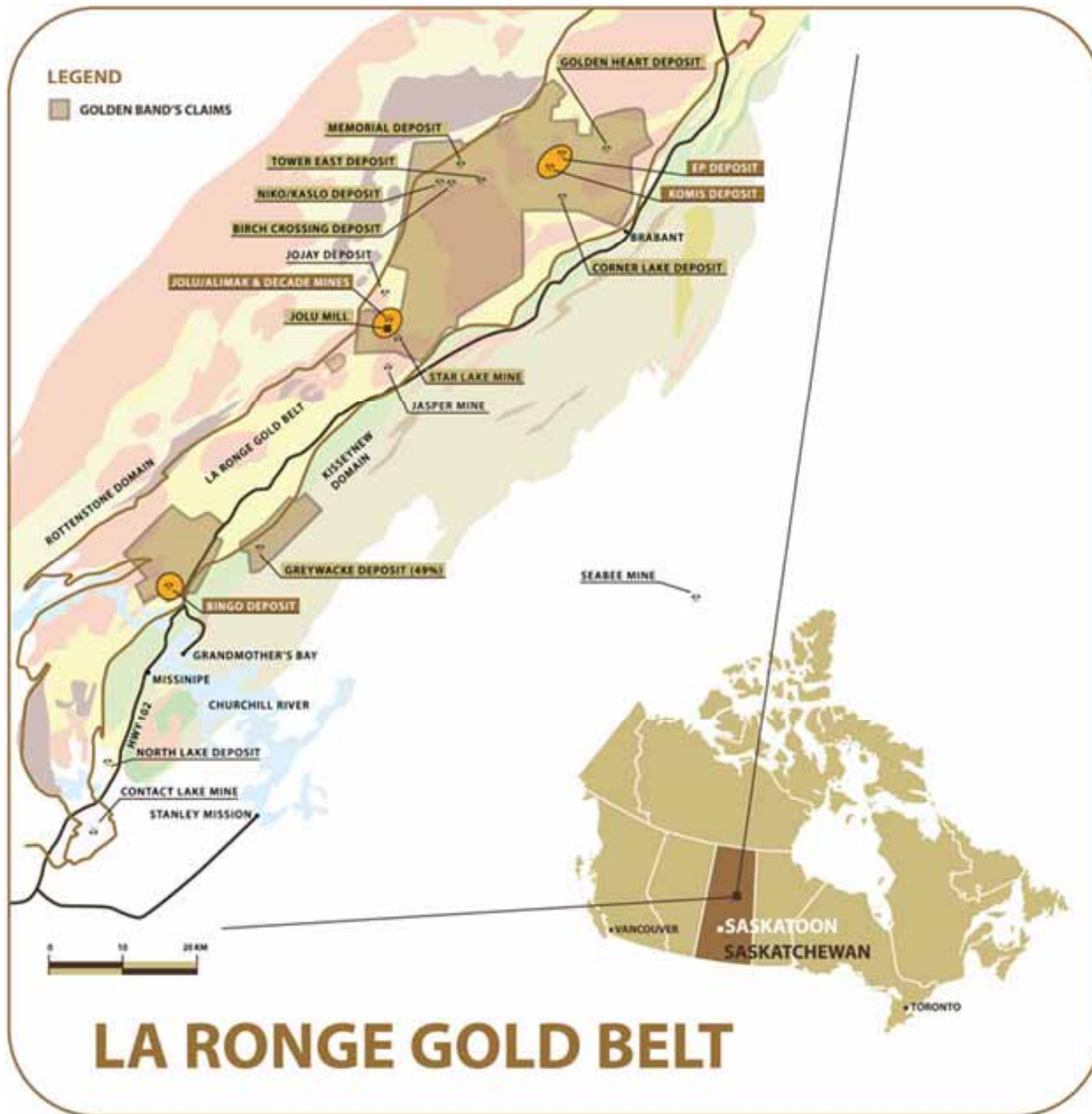


# Notices

All of Golden Band's exploration programs and pertinent disclosure of a scientific nature are prepared and/or designed and carried out under the supervision of Frank Hrdy, P.Geo., Golden Band's VP Exploration, who serves as the qualified person (QP) under the definitions of National Instrument 43-101. All of Golden Band's development-related programs and pertinent disclosure of a development nature are prepared and/or designed and carried out under the supervision of Gary Haywood, P.Eng., Golden Band's VP of Operations and COO, who serves as the qualified person (QP) under the definitions of National Instrument 43-101.

Forward Looking Statements: Some of the statements in this presentation contain forward-looking information which involves inherent risk and uncertainty that may affect the business of Golden Band Resources Inc. Actual results may differ materially from those currently anticipated in such statements.

The TSX Venture Exchange has not reviewed and does not accept responsibility for the adequacy or accuracy of this information.



# Golden Band Resources

- Owns 12 gold deposits.
- Owns 4 past-producers.
- >750 sq km of claims.
- Highway & road access.
- Grid power available.

# Gold Resources

- ✓ **831,800 ounces** - measured and indicated category\*
- ✓ **214,600 ounces** - inferred category\*
- ✓ Resource updates pending for Bingo, EP, Birch Crossing, Corner Lake, Niko/Kaslo and Greywacke.
- ✓ Excellent potential to expand resources through exploration and acquisitions.

\* NI 43-101 resources for 8 of 12 deposits



# Gold Resources

Golden Band Resources Inc.

Summary of Measured + Indicated, and Inferred Gold Resources (NI 43-101 compliant)

Deposit	Assays Capped at (g/t Au)	Measured + Indicated Resources				Inferred Resources			
		Cut off (g/t Au)	Tonnes	Grade (g/t Au)	Resources (ounces Au)	Cut off (g/t Au)	Tonnes	Grade (g/t Au)	Resources (ounces Au)
Komis	70	1.0	990,000	3.81	121,300	1.0	94,000	2.98	9,000
Tower East	15	1.0	5,019,080	1.858	299,835	1.0	902,020	1.516	43,965
Golden Heart	24	1.0	4,486,400	1.80	259,900	1.0	598,800	1.66	31,900
Memorial	30	1.0	288,400	2.83	26,220	1.0	90,900	2.49	7,272
EP	77	1.0	22,700	7.18	5,240	1.0	62,600	3.84	7,729
Birch Crossing	120					2.0	536,300	5.11	88,100
Greywacke*	33.15	5.0	90,160	8.4	24,353	5.0	28,420	7.29	6,664
Bingo	105 and 70	5.0	148,564	14.04	94,954	5.0	42,099	14.75	19,966
Totals:			11,045,304		831,802		2,355,139		214,587

Golden Band owns 4 other deposits (Jolu, Decade, Niko/Kaslo, Corner Lake) that do not have reportable NI 43-101 compliant resources.

\*Golden Band owns 49% of Greywacke gold deposit and only that portion is included in the table.

# Exploration Accomplishments 2008

## Summary

- Over 17,000 (>18,500) metres drilling to date
- 316 metres underground advance
- Upgraded Resources and New Additions: Bingo, Birch Crossing, Greywacke, Decade, Jolu-Alimak, RKN

## 1. Bingo Deposit

- Updated Geological Model and Resource Estimate x2
- Underground Bulk Sample on 2 Levels (316.8 metres of advance)
- >4,500 of surface drilling to test (11 ddh's) for the continuation of high grade gold down plunge
- 1,135 metres bazooka underground drill holes (103 ddh's)
- Area prospecting, sampling, drilling (>400 metres)

# Exploration Accomplishments 2008

## 2. Decade Gold Deposit

- ✓ 3,800 metres (39 ddh's) of drilling (3 programs) – new zones
- ✓ Area prospecting, sampling

## 3. Birch Crossing

- ✓ Updated Resource Estimate: 536,300 Tonnes at 5.11 g/t Au = 88,100 oz Au
- ✓ 1,663 metres (11 ddh's)

## 4. Niko/Kaslo

- ✓ 523.6 metres (6 ddh's)

## 5. RKN Gold Prospect

- ✓ 156.6 g/t Au/2.74 metres, 2,086.6 metres (8 ddh's)
- ✓ Second phase drilling in progress

## 6. Jolu-Alimak Zone (Jolu Gold Mine)

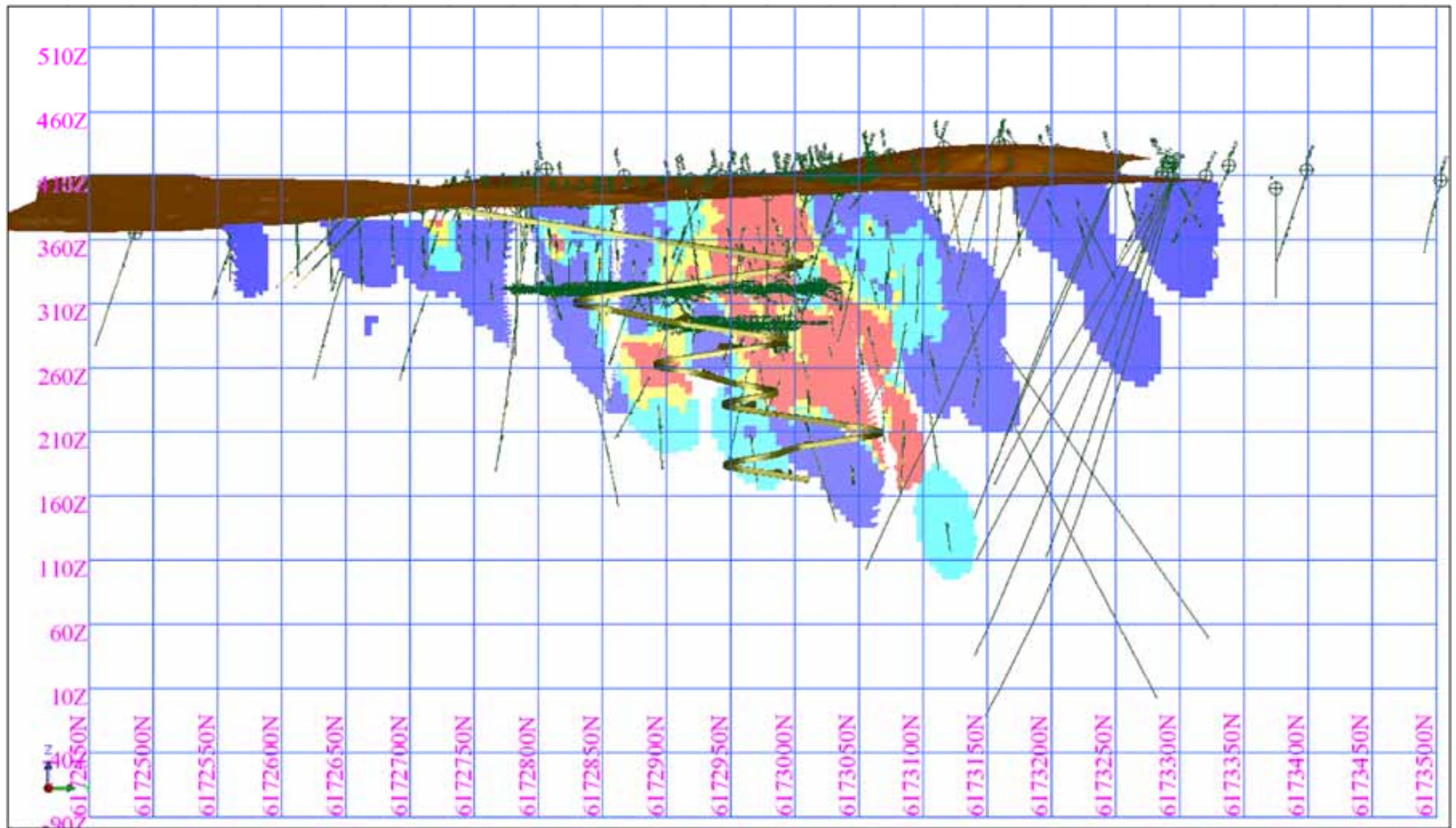
- ✓ 2,358 metres (21 ddh's) – ongoing
- ✓ Area prospecting, sampling

## 7. Greywacke Gold Deposit (GBN 49%)

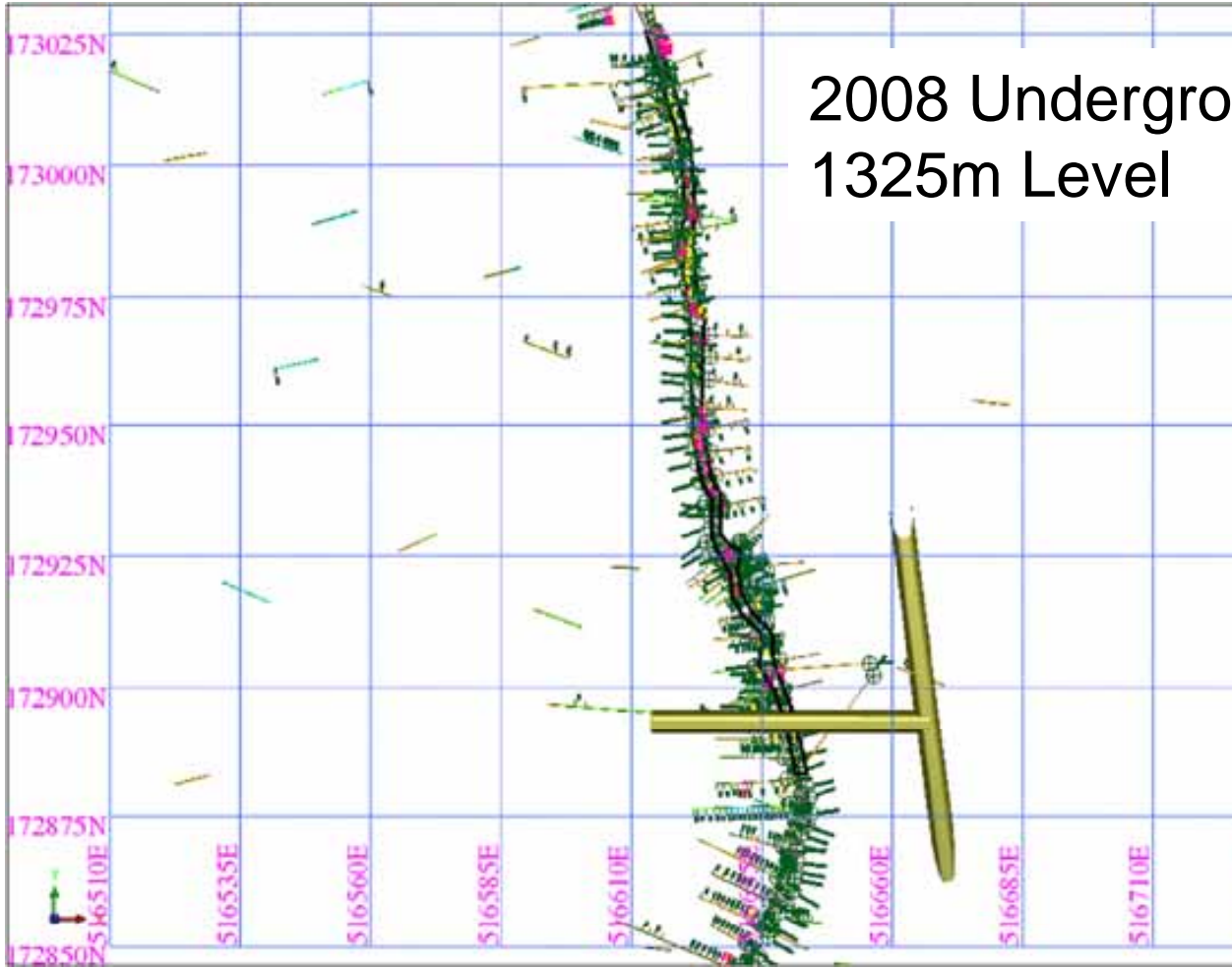
- ✓ 3,001 metres (19 ddh's)
- ✓ Resource: 24,250 ounces Indicated, 6,950 Inferred (GBN's share)

## 8. Golden Heart Gold Deposit

- ✓ 1,925 metres planned (11 ddh's)



# 2008 Underground Exploration: 1325m Level

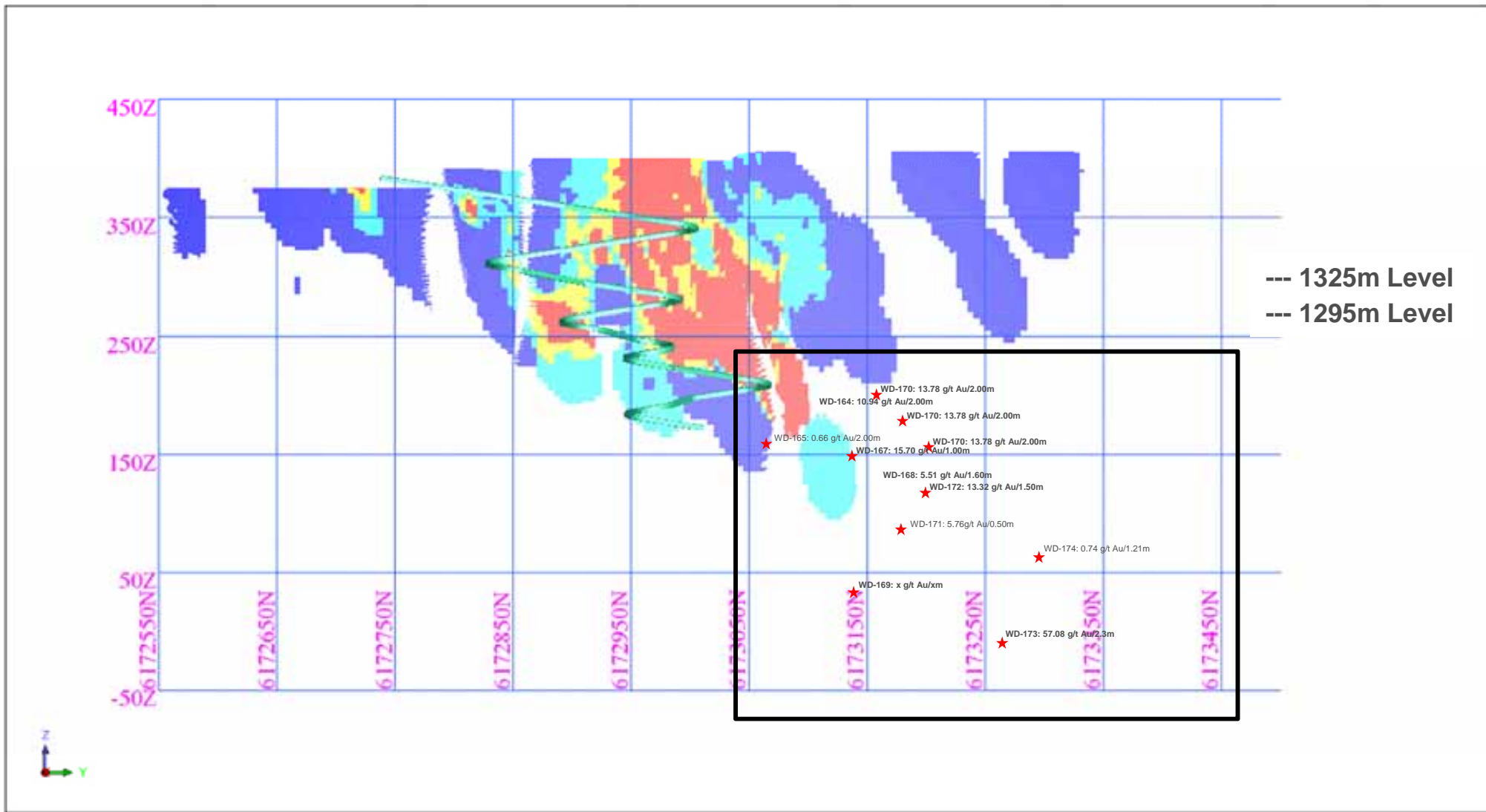


# Gold Resources – Bingo Deposit



3,692t high-grade stockpile from 2008 underground exploration program

# Longitudinal Section (looking west) of all drillhole locations at the Bingo Gold Deposit

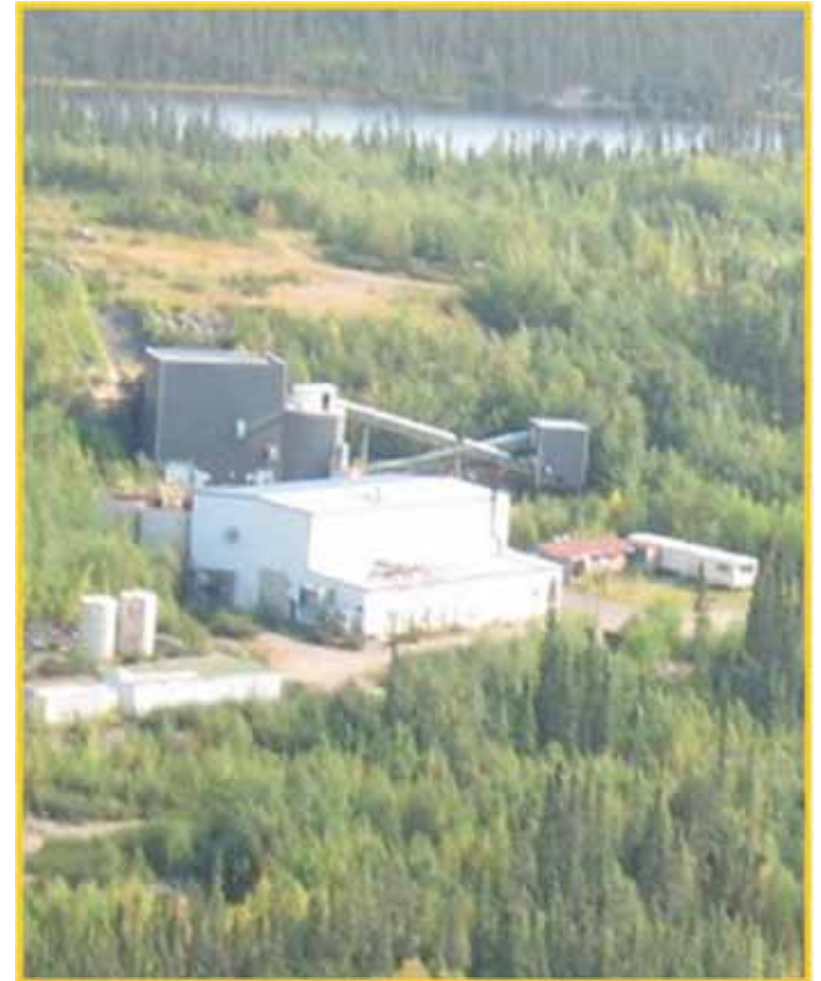


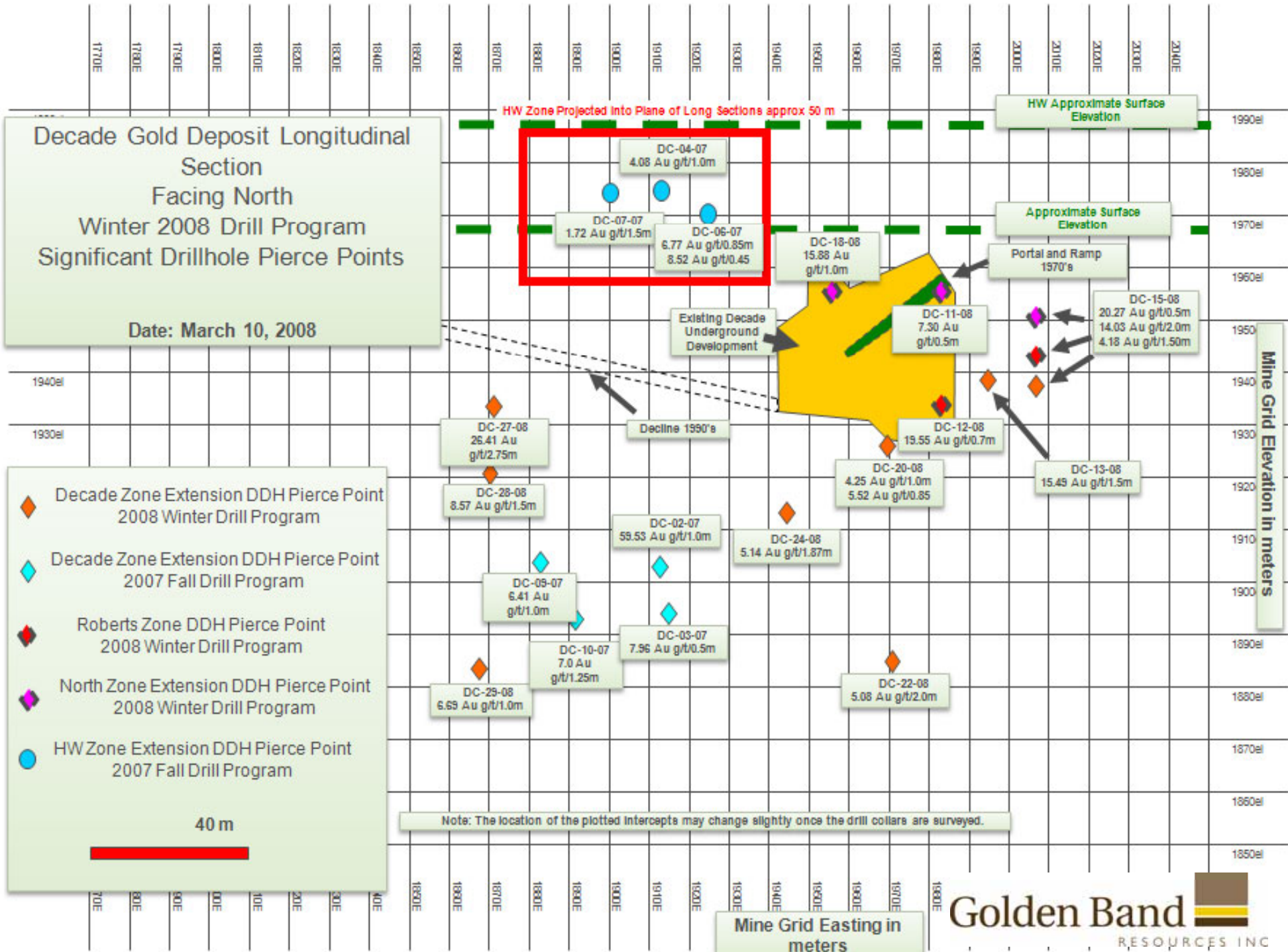
Note: Drillhole numbers are written at the bottom of the drill hole and the green sub-vertical lines represent the trace of each drillhole. The underground development (both planned and existing) is in light blue and the colored area represents the existing gold resources. Red indicates greater than 10 g/t gold, yellow represents 6-10 g/t gold and light blue represents 3-6 g/t gold.

Scale is in metres, with vertical depths Above Sea Level. Each grid square is 100 metres on a side.

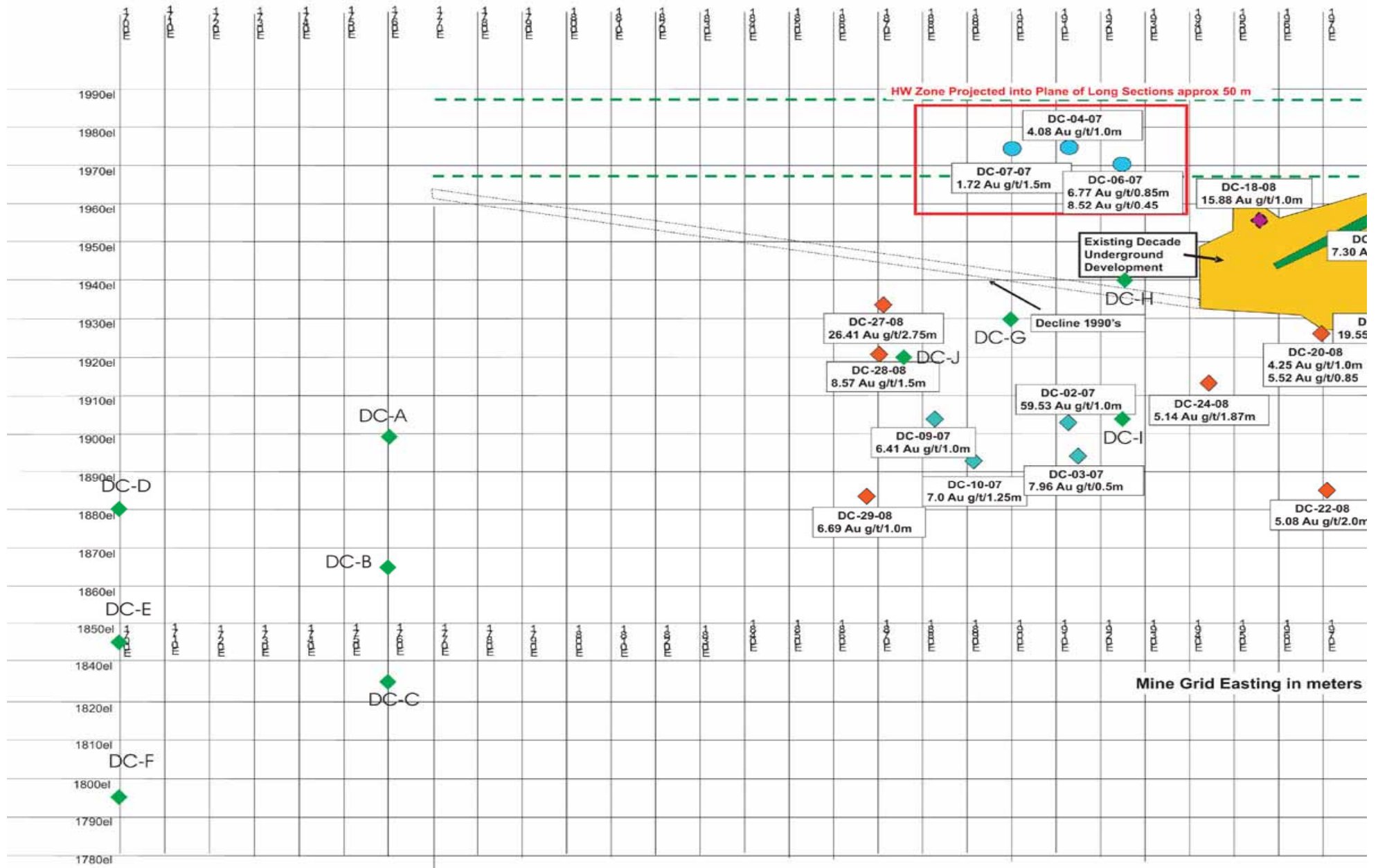
(November 26, 2008)

# Decade Gold Deposit





# Decade Gold Mine (Longitudinal View)



# Birch Crossing Gold Deposit

## Birch Crossing Gold Deposit: Winter 2008 Drilling Results

### Highlights:

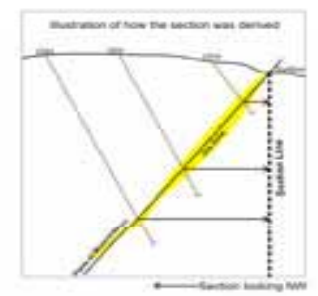
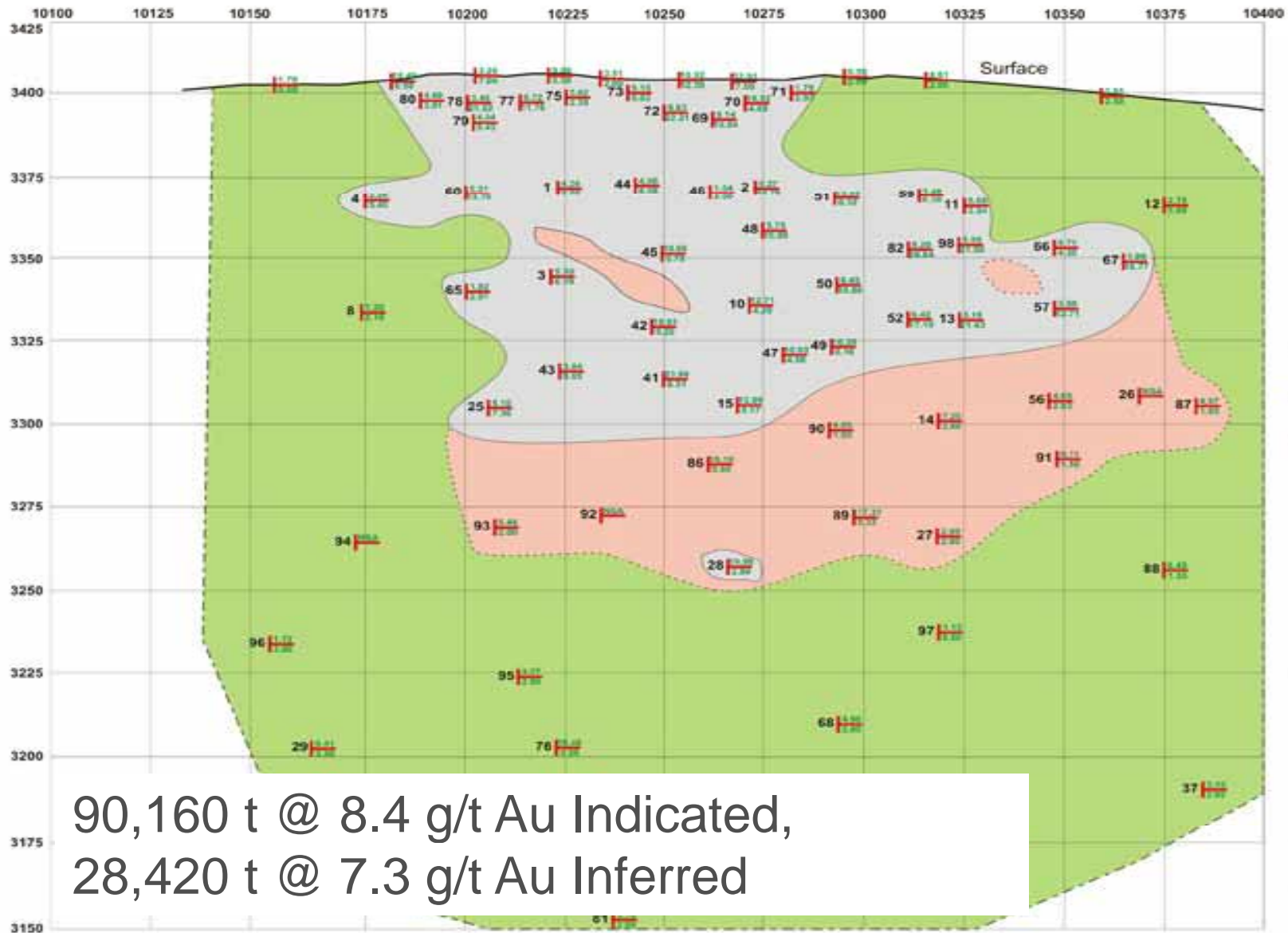
- 13.0 g/t Au/4.45 m (BC-88-08, including 47.7 g/t Au/0.9 m)
- 17.4 g/t Au/1.0 m (BC-88-08)
- 13.6 g/t Au/1.15 m (BC-89-08)
- 25.0 g/t Au/2.0 m (BC-93-08, including 46.2 g/t Au/1.0 m)
- 29.4 g/t Au/1.9 m (BC-94-08, including 53.3 g/t Au/0.85 m)
- 14.5 g/t Au/2.25 m and 14.3 g/t Au/2.85 m (BC-96-08)
- 8.3 g/t Au/6.5 m (BC-98-08, including 37.5 g/t Au/1.0 m)

## Kaslo Gold Prospect: Winter 2008 Drilling Results

### Highlights:

- 5.8 g/t Au/1.1 m (K-64-08)
- 0.1 g/t Au/2.42 m (K-65-08)
- 4.8 g/t Au/1.0 m (K-66-08)
- 13.8 g/t Au/1.52 m (K-67-08)

# Greywacke Deposit (Longitudinal View)



## LEGEND

- Approximate Indicated Resource outline defined by Masuparia in 2007
- Approximate Inferred Resource outline defined by Masuparia in 2007
- Approximate additional Indicated Resource outline defined by Masuparia in 2008
- NSA: No Significant Assays
- Drill hole number (prefix GW + year)      Gold g/t
- Intersection point (centre of zone)      Horizontal width (in metres)

**MASUPARIA GOLD CORPORATION  
GREYWACKE GOLD PROJECT**

LA RONGE DISTRICT  
SASKATCHEWAN

GREYWACKE NORTH ZONE  
LONGITUDINAL SECTION OF THE  
FOOTWALL PROJECTED ONTO A  
VERTICAL PLANE FACING  
NORTHWEST (310 Au)

Jonnes, 2008



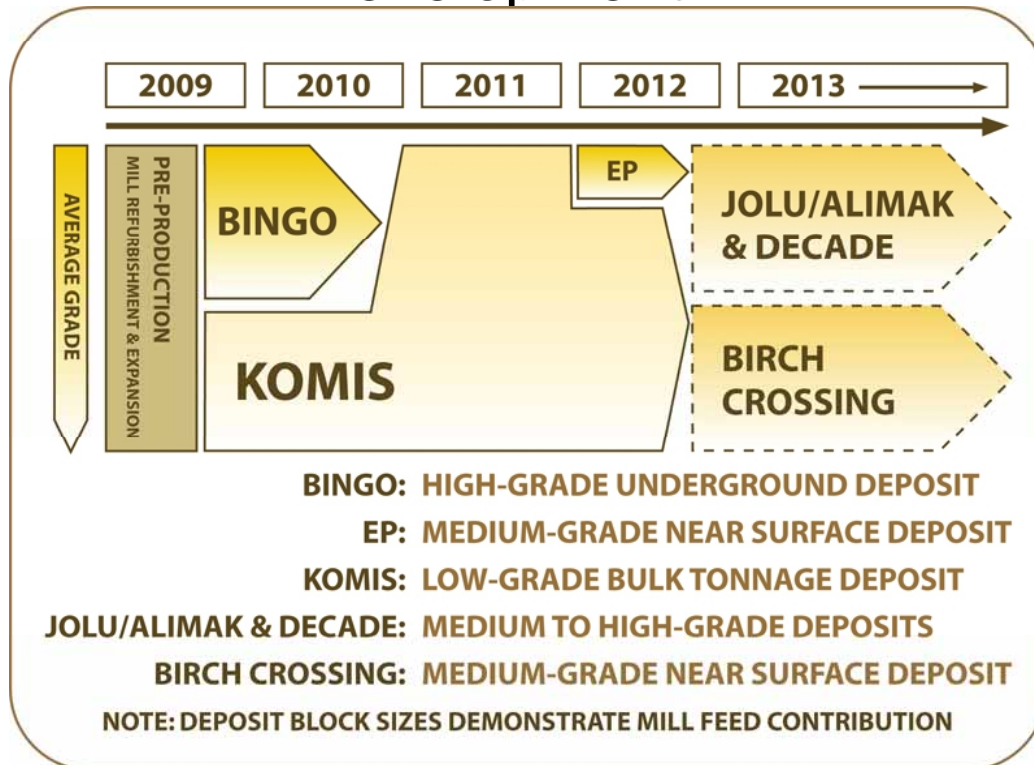
90,160 t @ 8.4 g/t Au Indicated,  
28,420 t @ 7.3 g/t Au Inferred

# Business Plan

## Exploration:

- Continue Expanding the Resources
- Continue Advancing Resources to Production

## Development





Golden Band   
RESOURCES INC

100 - 701 Cynthia Street  
Saskatoon, SK, Canada S7L 6B7

[www.goldenbandresources.com](http://www.goldenbandresources.com)

GBN: TSX-V