

Saskatchewan's
New Gold Producer

Cambridge Resource Investment Conference

Update on Golden Band's La Ronge Gold Project

Ronald K. Netolitzky, Chairman

Vancouver, January 2012

Golden Band 

RESOURCES INC



Saskatchewan's New Gold Producer

Notices

Rodney Orr, P.Geo., Golden Band's VP of Corporate Development, serves as the qualified person (QP) under the definitions of NI 43-101.

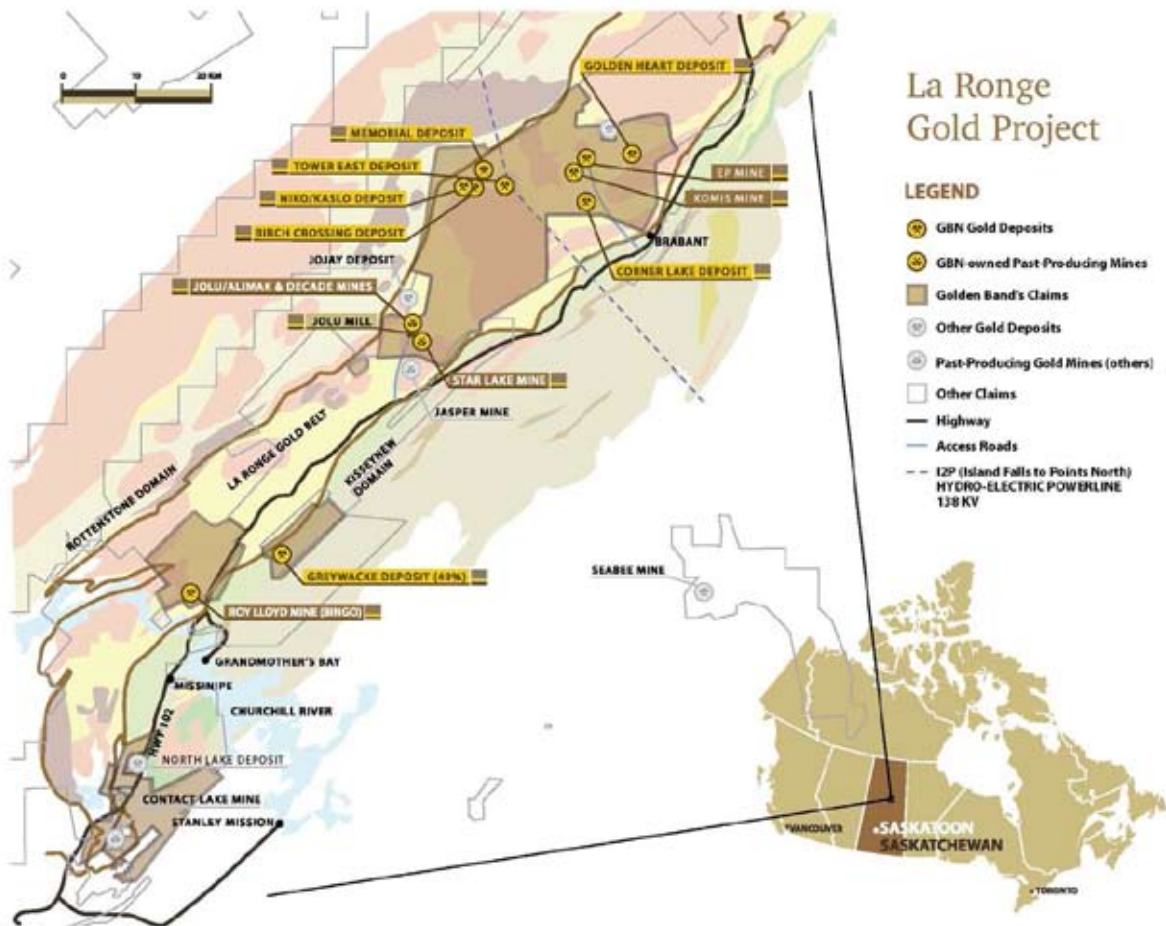
Forward Looking Statements: Some of the statements in this presentation contain forward-looking information which involve inherent risk and uncertainty that may affect the business of Golden Band Resources Inc. Actual results may differ materially from those currently anticipated in such statements.

Neither TSX Venture Exchange nor its Regulation Services Provider (as that term is defined in the policies of the TSX Venture Exchange) accepts responsibility for the adequacy or accuracy of this information.

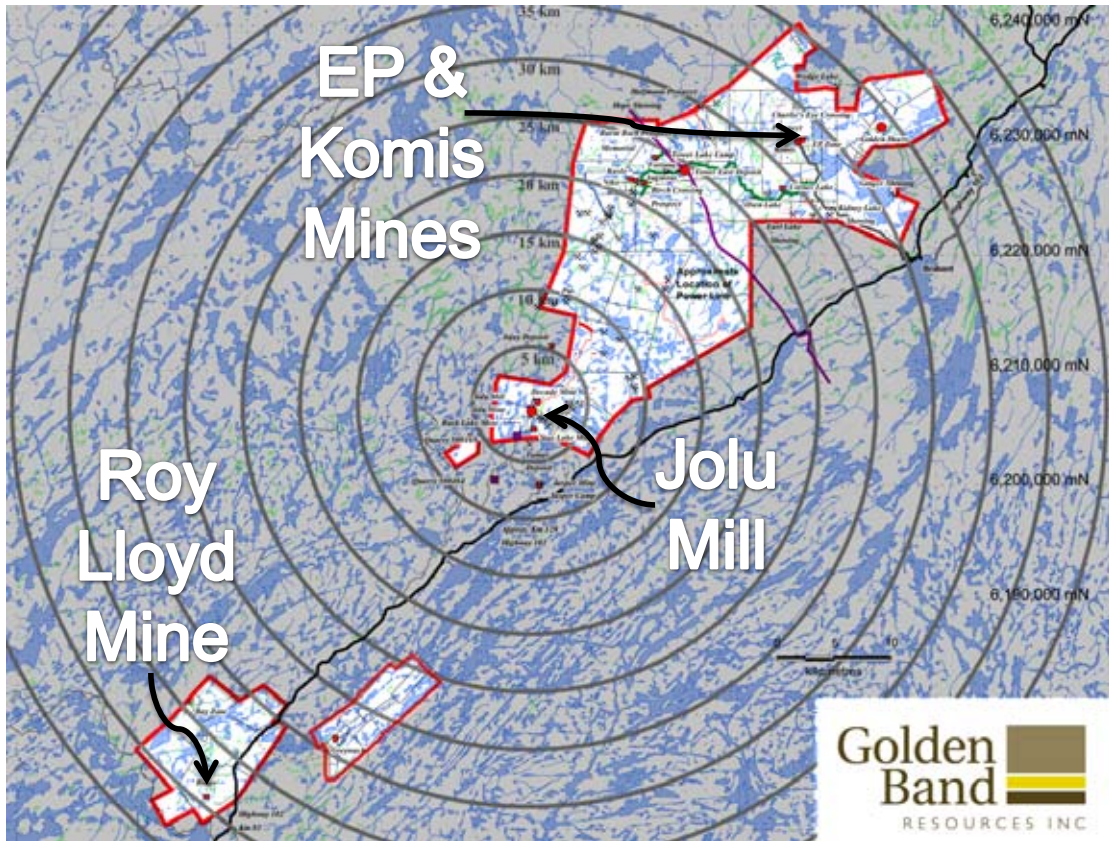
La Ronge Gold Project

LEGEND

- GBN Gold Deposits
- GBN owned Past Producing Mines
- Golden Band's Claims
- Other Gold Deposits
- Past-Producing Gold Mines (others)
- Other Claims
- Highway
- Access Roads
- 12P (Island Falls to Points North) HYDRO-ELECTRIC POWERLINE 138 KV



La Ronge Gold Belt: GBN Operations



Golden Band (GBN) Highlights

- GBN has 12 known deposits, 4 former mines, a mill, and >875 km² of mineral rights
- Past-producing gold camp, with excellent potential for increasing existing resources and new discoveries
- Working in area since 1994, giving long-term perspective & strong working relationships with local communities
- Strong current involvement with several local communities providing employees and contractors for goods and services



GBN Highlights (continued)

- 700 tonne-per-day (tpd) Jolu gold mill within 75 km of all deposits
- Established infrastructure: road access, grid power to mill
- Provincial EA approval received for Roy Lloyd Mine (Bingo), EP and Komis deposits; approval sought for Golden Heart
- Declared Commercial Production as of April 1, 2011
- Vast majority of production came from high-grade underground Roy Lloyd Mine

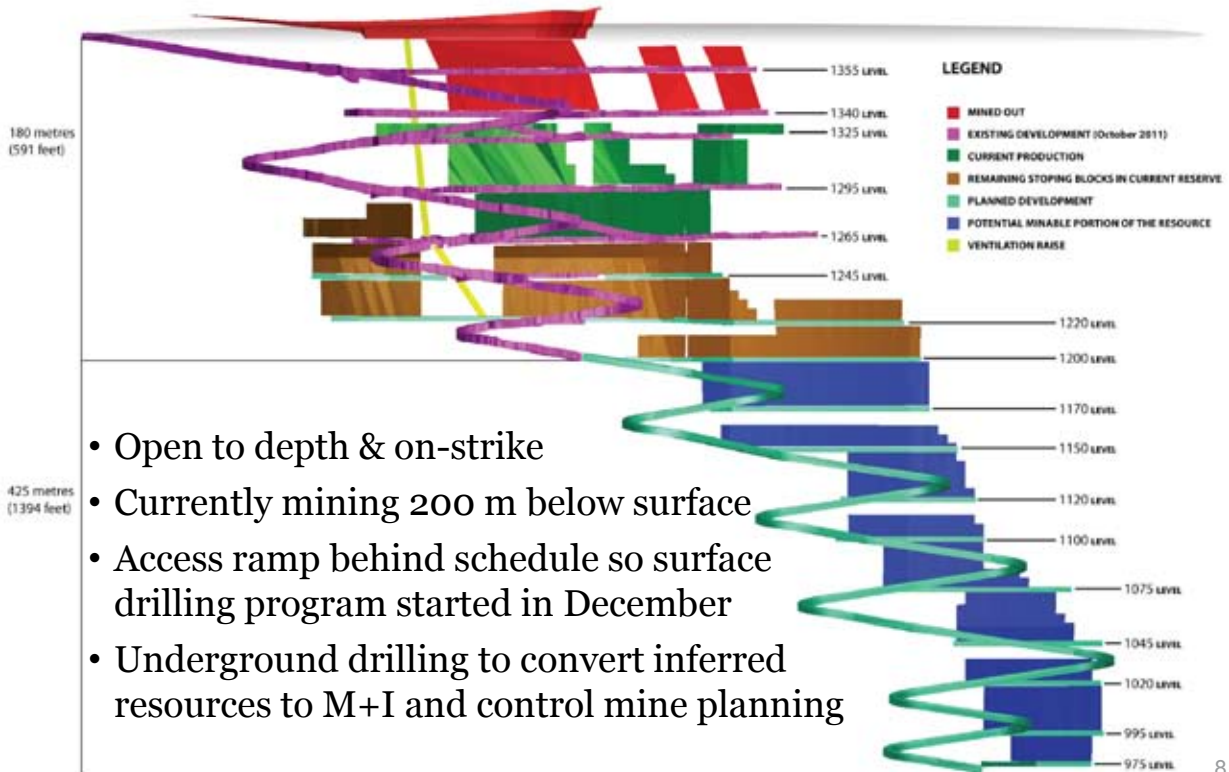


YTD Highlights Q1 + Q2

- Mining production:
50,612 t @ 12.4 g/t Au
- Mill throughput:
61,523 t @ 11.14 g/t Au
- Gold poured: 22,803 oz
- Total cash cost/oz: US\$900
- In Q2, became cash flow positive from operations = \$8.9M
- Total production to date = 33,151 oz, sold for average of approx. US\$1,621/oz



Roy Lloyd Mine: Underground Mine Model



EP Mine

- Started site preparation & pre-strip October 2011
- Mining high-grade till in December: 10,271 t to month-end
- Riddle Till avg. grade 12.77 g/t Au from 756 muck samples ranging nil to 923 g/t Au.



EP Deposit: Open Pit Mine Model

LEGEND
■ PROPOSED PIT
■ GOLD DEPOSIT

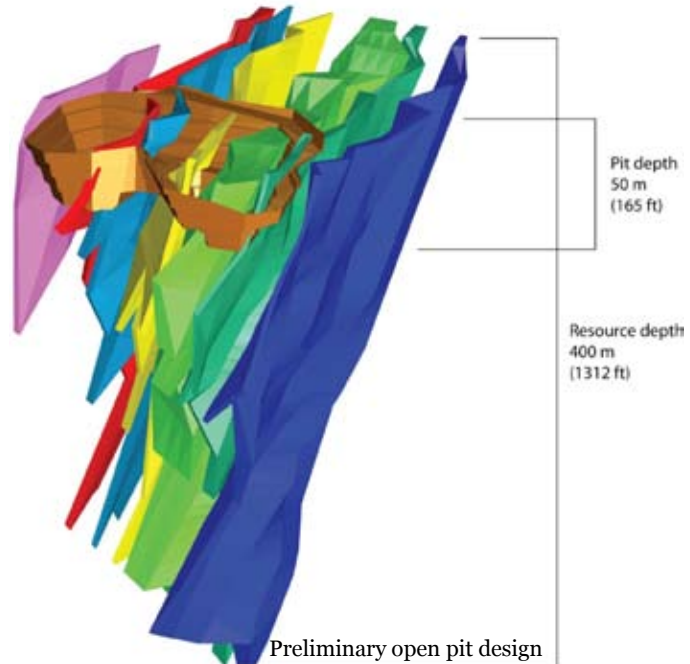
Komis Mine

- Komis underground dewatering completed
- Geological & engineering assessment and underground exploration development started August, to provide resource model; work is well underway, including new u/g crosscut
- New mine plan will come from revised resource model + u/g access + drilling on trend and to depth
- Plans are for Komis o/p & possible u/g mine by end of EP production



Golden Heart Development Work

- Resource definition drilling completed
- Updates to optimization and open pit design in progress
- Final stage of EA review
- Haul road & site construction on receipt of approvals
- Production start for 2013



Future Development Plans

The above discussed deposits are anticipated to supply mill feed for a minimum of the first four or five years.

Additional deposits to be advanced through permitting phase include:

- **Corner Lake deposit:**

- Requires drilling to take the resource to M&I and permitting
- Narrow high-grade deposit as an underground operation

- **Greywacke deposit (49:51 JV with MAS):**

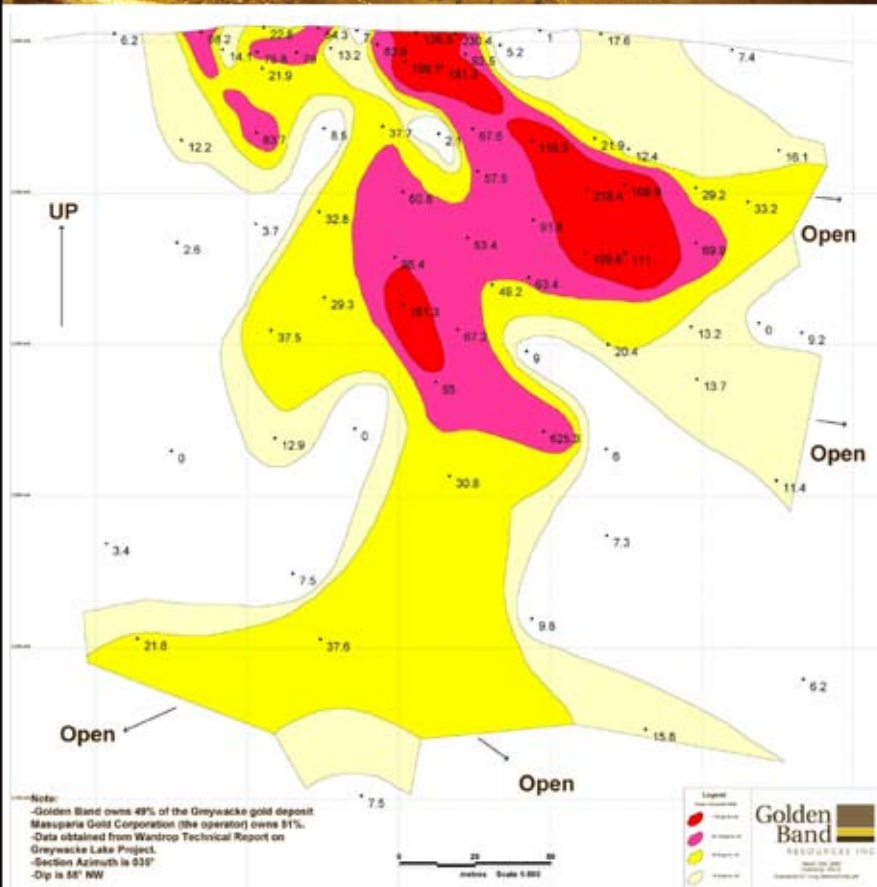
- Requires permitting and a limited amount of diamond drilling.
- Likely commence as o/p with possible u/g second phase
- Near surface grades and thicknesses are good

Future Development Plans

Greywacke deposit

Longitudinal Section looking NW

Contoured grade x horizontal width



Saskatchewan's New Gold Producer

Directors

- Ronald K. Netolitzky **MSc**, Chairman
Klaus Lehnert-Thiel **PhD, P.Eng., P.Geo.**
A. Robson Garden **QC**
Robert Ingram **CA**
Stuart Diamond **JD, MBA**
John Tosney **MSc, P.Eng.**
Archibald J. Nesbitt **LL.B, B.Comm.**

Senior Officers

- A. Robson Garden **QC**, President and CEO
Mark Thiel **CA**, VP of Finance and Administration, CFO, Corporate Secretary
Rodney Orr **P.Geo., MBA**, VP Corporate Development





Thank You

Golden Band Resources Inc.

100, 701 Cynthia Street
Saskatoon, SK S7L 6B7

T 306.955.0787 F 306.955.0788
www.goldenbandresources.com

Ronald Netolitzky, Chairman
A. Robson Garden, President & CEO

Investor Relations

Raju Wani 403.240.0555
info@goldenbandresources.com

Tony Perri 604.682.6852
info@goldenbandresources.com